

Steel ball valves, full bore with gears and actuators

welding/welding, EN (DIN), DN 100-500, with manual gear

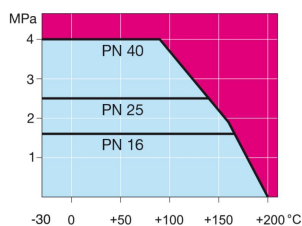
Body: DN 15-400 Steel, P235GH (1.0345)
 DN 500-800 Steel, P355 NL1 (1.0566)/ GP240GH (1.0619)
 Ball: DN 15-500 Stainless steel, X5CrNi18-10 (1.4301)
 DN 600-800 Steel + stainless plating, ASTM A350 LF2+Ni
 Stem: Stainless steel, X8CrNiS18-9 (1.4305)
 Stem seals: FPM
 Ball seals: PTFE+C
 Operation: Valve is equipped with manual gear.
 For type and features of manual gear please refer to:
www.vexve.com/en/actuators.



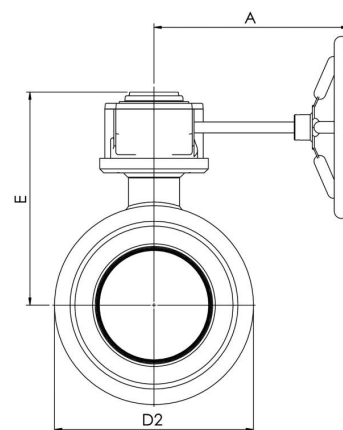
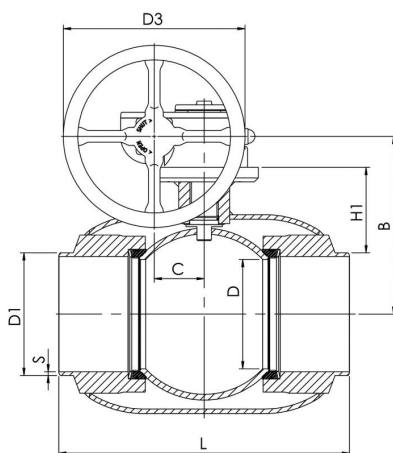
Operating conditions

-30°C - +200°C

Below 0 °C contact manufacturer



Not for steam



Product no. Vexve	DN	PN	A	B	C	D	D1	D2	D3	E	H1	L	S	kg
154100	100	25	224	216	53	100	114.3	177.8	200	258	124	325	3.6	20
154125	125	25	224	236	53	125	139.7	219.1	200	279	132	360	3.6	20
154150	150	25	268	244	69	150	168.3	273	250	293	117	400	4.5	29
154200	200	25	301	294	97	200	219.1	355.6	300	345	135	530	5	61
154250	250	25	363	343	117	250	273	457	500	412	158	550	5	113
154300	300	25	363	418	117	290	323.9	508	500	487	206	686	5.6	164
154350	350	25	440	500	138	340	355.6	610	500	573	267	762	6.3	216
154400	400	25	471	576	180	390	406	660	500	648	309	1100	7.1	305
154500	500	25	471	643	180	489	508	813	500	714	325	970	7.1	603



Steel ball valves, full bore with gears and actuators

welding/welding, EN (DIN), DN 600-800, with manual gear

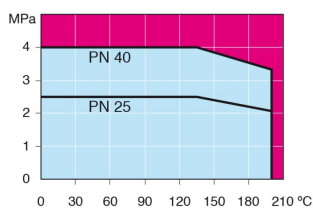
Body: DN 15-400 Steel, P235GH (1.0345)
 DN 500-800 Steel, P355 NL1 (1.0566)/ GP240GH (1.0619)
 Ball: DN 15-500 Stainless steel, X5CrNi18-10 (1.4301)
 DN 600-800 Steel + stainless plating, ASTM A350 LF2+Ni
 Stem: Stainless steel, X8CrNiS18-9 (1.4305)
 Stem seals: FPM
 Ball seals: PTFE+C
 Equipment: lifting lugs, drain valve, mounting stand
 Operation: Valve is equipped with manual gear.
 For type and features of manual gear please refer to:
www.vexve.com/en/actuators.



Operating conditions

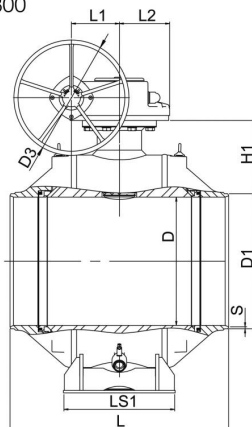
-30°C - +200°C

Below 0 °C contact manufacturer

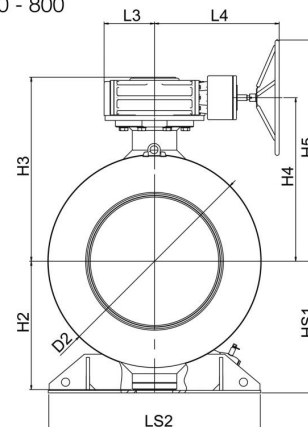


Not for steam

DN 600 - 800



DN 600 - 800



Product no. Vexve	DN	PN	D	D1	D2	D3	H1	H2	H3	H4	H5	HS1	L	L1	L2	L3	L4	LS1	LS2	S	kg
154600	600	40	589	610	965	700	387	592	881	778	1128	616	1065	253	222	255	593	560	965	7.1	2550
154700	700	40	684	711	1125	700	417	684	961	858	1208	709	1205	253	222	255	593	700	1028	8	3650
154800	800	40	779	813	1290	700	449	779	1118	993	1343	799	1330	292	306	306	757	680	1290	8.8	5500

Available also PN 40



Steel ball valves, full bore with gears and actuators

flange/flange, DN 100-500, with manual gear

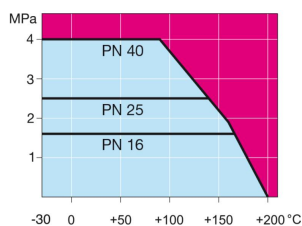
Body: DN 15-400 Steel, P235GH (1.0345)
 DN 500-800 Steel, P355 NL1 (1.0566)/ GP240GH (1.0619)
 Ball: DN 15-500 Stainless steel, X5CrNi18-10 (1.4301)
 DN 600-800 Steel + stainless plating, ASTM A350 LF2+Ni
 Stem: Stainless steel, X8CrNiS18-9 (1.4305)
 Stem seals: FPM
 Ball seals: PTFE+C
 Operation: Valve is equipped with manual gear.
 For type and features of manual gear please refer to:
www.vexve.com/en/actuators.



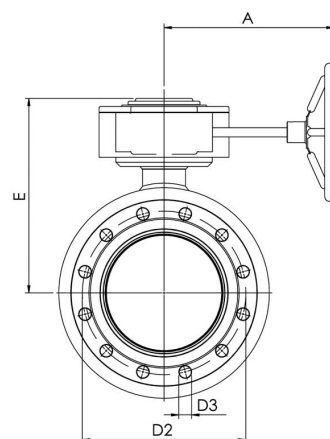
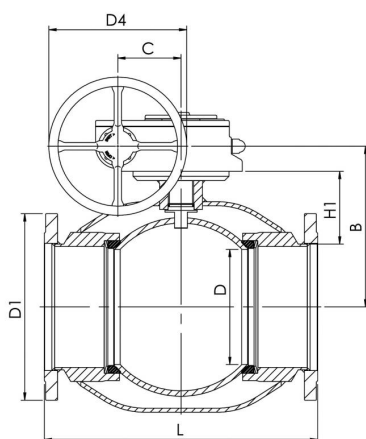
Operating conditions

-30°C - +200°C

Below 0 °C contact manufacturer



Not for steam



Product no. Vexve	DN	PN	A	B	C	D	D1	D2	D3	D4	E	H1	L	Holes	kg
154101	100	16	224	216	53	100	220	180	18	200	258	124	300	8	31
154126	125	16	224	236	53	125	250	210	18	200	279	132	400	8	39
154151	150	16	268	244	69	150	285	240	22	250	293	117	515	8	67
154201	200	16	301	294	97	200	340	295	22	300	345	135	560	12	120
154251	250	16	363	343	118	250	405	355	26	500	412	158	595	12	165
154301	300	16	363	418	118	290	460	410	26	500	487	206	716	12	260
154351	350	16	440	500	138	340	520	470	26	500	573	266	802	16	360
154401	400	16	471	576	180	390	580	525	30	500	648	306	1140	16	680
154501	500	16	475	643	180	489	715	650	33	500	714	308	1016	20	1260



Steel ball valves, full bore with gears and actuators

flange/flange, DN 600-800, with manual gear

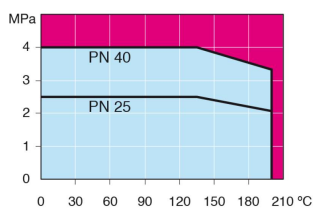
Body: DN 15-400 Steel, P235GH (1.0345)
 DN 500-800 Steel, P355 NL1 (1.0566)/ GP240GH (1.0619)
 Ball: DN 15-500 Stainless steel, X5CrNi18-10 (1.4301)
 DN 600-800 Steel + stainless plating, ASTM A350 LF2+Ni
 Stem: Stainless steel, X8CrNiS18-9 (1.4305)
 Stem seals: FPM
 Ball seals: PTFE+C
 Equipment: lifting lugs, drain valve, mounting stand
 Operation: Valve is equipped with manual gear.
 For type and features of manual gear please refer to:
www.vexve.com/en/actuators.



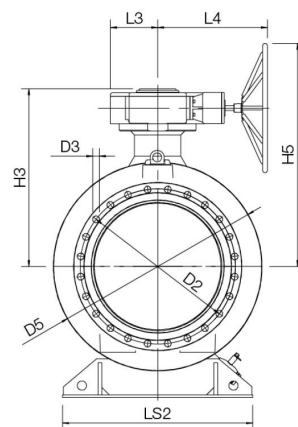
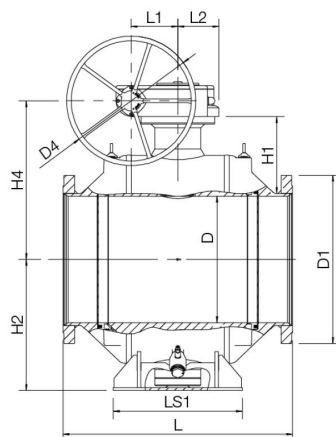
Operating conditions

-30°C - +200°C

Below 0 °C contact manufacturer



Not for steam



Product no. Vexve	DN	PN	D	D1	D2	D3	D4	D5	H1	H2	H3	H4	H5	L	L1	L2	L3	L4	LS1	LS2	Holes	kg
154601	600	16	589	840	770	36	700	965	371	616	881	778	1128	1130	253	222	255	593	560	965	20	2650
154701	700	16	684	910	840	36	700	1125	406	709	961	858	1208	1245	253	222	255	593	700	1028	24	3760
154801	800	16	779	1025	950	39	700	1290	448	799	1118	993	1343	1385	292	306	306	757	680	1290	24	5760

