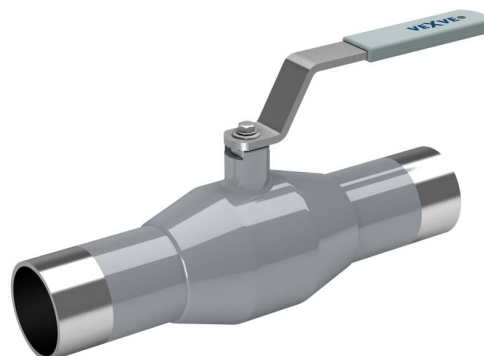


# Stainless steel ball valves, reduced bore

welding/welding, EN (DIN), DN 10-250

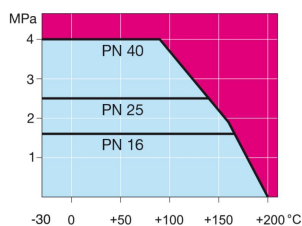
Body: Stainless steel, X2CrNiMo17-12-2 (1.4404)  
 Ball: Stainless steel, X2CrNiMo17-12-2 (1.4404)  
 Stem: Stainless steel, X2CrNiMo17-12-2 (1.4404)  
 Stem seals: FPM/NBR  
 Ball seals: PTFE+C  
 Operation: DN 10–50 with stainless steel handle.  
 DN 65–250 with zinc-plated steel handle.



## Operating conditions

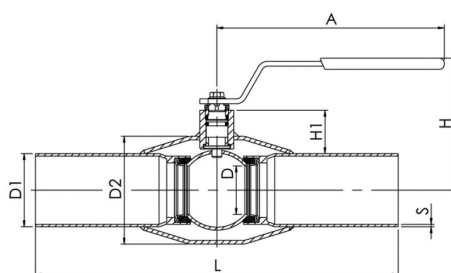
-30 °C - +200 °C

Below -10 °C contact manufacturer

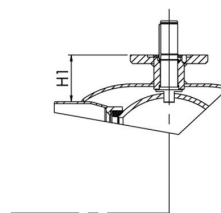


Not for steam

DN 10 - 150



DN 200 - 250



Product no. Vexve	DN	PN	A	D	D1	D2	H	H1	L	S	kg
230010	10	40	145	10	17.2	33.7	98	23	230	2	0.5
230015	15	40	145	10	21.3	33.7	98	21	230	2	0.5
230020	20	40	145	15	26.9	42.4	103	22	230	2	0.7
230025	25	40	145	20	33.7	48.3	112	28	230	2	0.8
230032	32	40	145	25	42.4	60.3	116	27	260	2	1.2
230040	40	40	188	32	48.3	70	111	34	260	2.5	1.8
230050	50	40	188	40	60.3	88.9	118	34	300	3	2.2
230065	65	25	278	50	76.1	114.3	150	51	300	3	3.8
230080	80	25	278	65	88.9	131	160	58	300	3	4.7
230100	100	25	278	80	114.3	156	175	54	325	3	6.7
230125	125	25	400	100	139.7	177.8	220	68	325	4	13
230150	150	25	600	125	168.3	219.1	240	74	350	4	18
230200	200	25	870	150	219.1	273	280	92	400	4	32
230250	250	25	1200	200	273	355.6	340	108	530	4	63



# Stainless steel ball valves, reduced bore

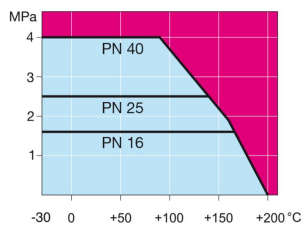
female threads/welding, EN (DIN), DN 10-50

Body: Stainless steel, X2CrNiMo17-12-2 (1.4404)  
 Ball: Stainless steel, X2CrNiMo17-12-2 (1.4404)  
 Stem: Stainless steel, X2CrNiMo17-12-2 (1.4404)  
 Stem seals: FPM/NBR  
 Ball seals: PTFE+C  
 Thread: ISO 7-1 Rp  
 Welding end: EN 12627  
 Operation: With stainless steel handle

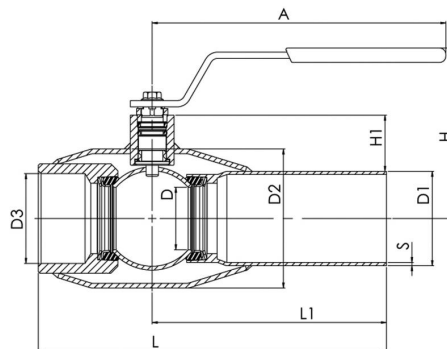


## Operating conditions

-30 °C - +200 °C  
 Below -10 °C contact manufacturer



Not for steam



Product no. Vexve	DN	PN	A	D	D1	D2	D3	H	H1	L	L1	S	kg
231010	10	40	145	10	17.2	33.7	R 3/8	99	23	153	116	2	0.5
231015	15	40	145	10	21.3	33.7	R 1/2	99	21	158	116	2	0.5
231020	20	40	145	15	26.9	42.4	R 3/4	103	22	165	115	2	0.7
231025	25	40	145	20	33.7	48.3	R 1	113	28	172	115	2	0.8
231032	32	40	145	25	42.4	60.3	R 1 1/4	116	27	195	130	2	1.2
231040	40	40	188	32	48.3	70	R 1 1/2	112	34	205	130	2.5	1.8
231050	50	40	188	40	60.3	88.9	R 2	118	34	240	150	3	2.8



# Stainless steel ball valves, reduced bore

female threads/female threads, DN 10-50

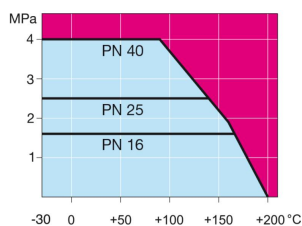
Body: Stainless steel, X2CrNiMo17-12-2 (1.4404)  
 Ball: Stainless steel, X2CrNiMo17-12-2 (1.4404)  
 Stem: Stainless steel, X2CrNiMo17-12-2 (1.4404)  
 Stem seals: FPM/NBR  
 Ball seals: PTFE+C  
 Threads: ISO 7-1 Rp  
 Length: EN 16722  
 Operation: With stainless steel handle



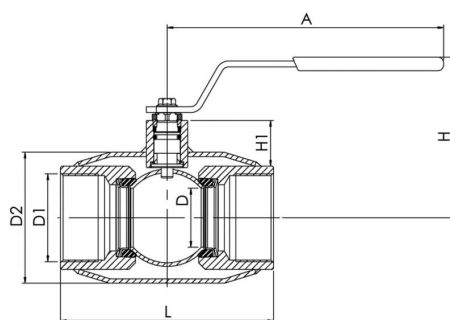
## Operating conditions

-30 °C - +200 °C

Below -10 °C contact manufacturer



Not for steam



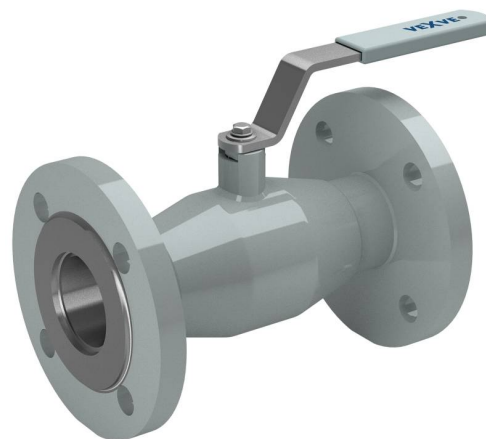
Product no. Vexve	DN	PN	A	D	D1	D2	H	H1	L	kg
232010	10	40	145	10	R 3/8	33.7	99	21	75	0.4
232015	15	40	145	10	R 1/2	33.7	99	19	85	0.4
232020	20	40	145	15	R 3/4	42.4	103	21	100	0.5
232025	25	40	145	20	R 1	48.3	113	26	115	0.8
232032	32	40	145	25	R 1 1/4	60.3	116	25	130	1.1
232040	40	40	188	32	R 1 1/2	70	112	31	150	1.7
232050	50	40	188	40	R 2	88.9	118	31	180	2.7



# Stainless steel ball valves, reduced bore

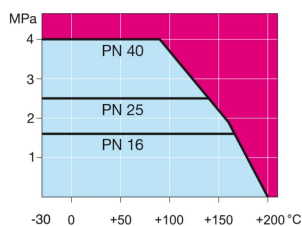
flange/flange, DN 15-250

Body: Stainless steel, X2CrNiMo17-12-2 (1.4404)  
 Ball: Stainless steel, X2CrNiMo17-12-2 (1.4404)  
 Stem: Stainless steel, X2CrNiMo17-12-2 (1.4404)  
 Stem seals: FPM/NBR  
 Ball seals: PTFE+C  
 Flanges: EN 1092-1  
 Available PN 10, 16, 25, 40  
 Length: EN 558-1 (DIN 3202) DN 15-200  
 Operation: DN 10-50 with stainless steel handle.  
 DN 65-250 with zinc-plated steel handle.



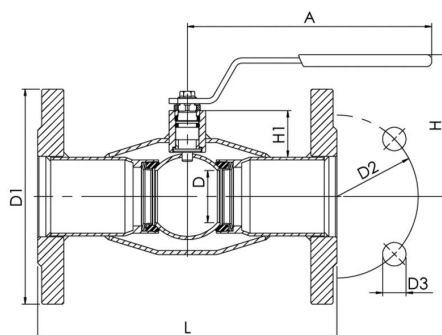
## Operating conditions

-30 °C - +200 °C  
 Below -10 °C contact manufacturer

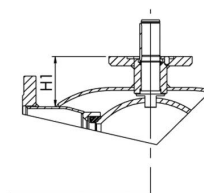


Not for steam

DN 15 - 150



DN 200 - 250



Product no. Vexve	DN	PN	A	D	D1	D2	D3	H	H1	L	Holes	kg
233015	15	40	145	10	95	65	14	99	21	130	4	1.9
233020	20	40	145	15	105	75	14	103	22	150	4	2.7
233025	25	40	145	20	115	85	14	113	28	160	4	3.4
233032	32	40	145	25	140	100	18	116	27	180	4	5
233040	40	40	188	32	150	110	18	112	34	200	4	6.1
233050	50	40	188	40	165	125	18	118	34	230	4	8.5
233065	65	16	278	50	185	145	18	148	51	270	8	10.5
233080	80	16	278	65	200	160	18	160	58	280	8	12
233100	100	16	278	80	220	180	18	171	54	300	8	15.5
233125	125	16	400	100	250	210	18	220	68	325	8	21
233150	150	16	600	125	285	240	22	240	74	350	8	25
233200	200	16	870	150	340	295	22	281	92	400	12	50
233250	250	16	1200	200	405	355	26	343	108	550	12	90

