

# Shut off butterfly valves, full bore

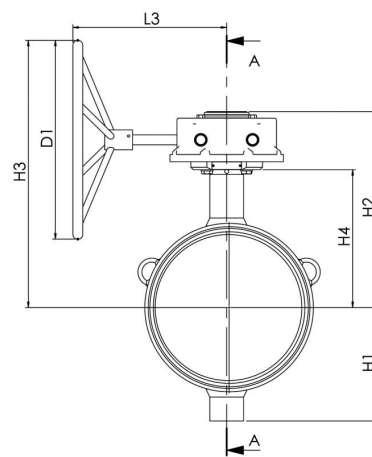
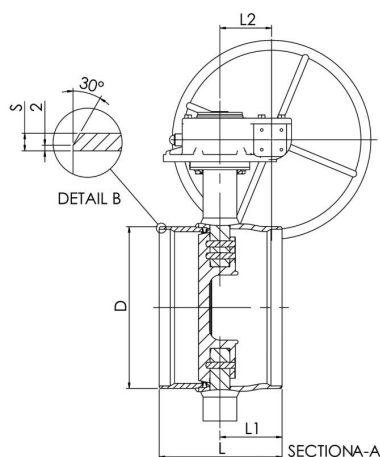
welding/welding, EN (DIN), DN 300-800,  $\Delta p = 16$  bar, shut-off, with manual gear

Body: DN 300 - 500 Steel, P235GH (1.0345)  
 DN 600 - 800 Steel, P355NL1 (1.0566)  
 Disc: Stainless steel, GX5CrNiMo19-11-2 (1.4408)  
 Seat: Alloy 825 + HCr plating  
 Shaft: Stainless steel, X3CrNiMoN27-5-2 (1.4460)  
 Shaft seal: FPM  
 Bearings: PTFE + AISI 316 net  
 Welding ends: EN 12627  
 Operation: Valve is equipped with manual gear.  
 For type and features of manual gear please refer to:  
[www.vexve.com/en/actuators](http://www.vexve.com/en/actuators).



## Operating conditions

Body: PN 25  
 Trim:  $\Delta p = 16$  bar  
 Temperature:  $-40\text{ }^{\circ}\text{C} - +200\text{ }^{\circ}\text{C}$   
 Below  $0\text{ }^{\circ}\text{C}$  contact manufacturer  
 Leakage rate: A (EN 12266-1)  
 Not for steam



Product no. Vexve	DN	D	D1	H1	H2	H3	H4	L	L1	L2	L3	S	kg
BFS300W1	300	323.9	400	247	411	577	315	270	110	94	261	5.6	70
BFS350W1	350	355.6	400	255	421	587	325	290	134	94	261	5.6	86
BFS400W1	400	406.4	500	285	490	672	347	310	157	130	393	6.3	130
BFS450W1	450	457	400	330	522	654	379	330	153	130	386	6.3	178
BFS500W1	500	508	400	360	551	683	408	350	153	130	386	6.3	213
BFS600W1	600	610	500	440	628	787	450	390	184	140	419	7.1	344
BFS700W1	700	711	400	495	684	784	501	430	203	182	441	8	491
BFS800W1	800	813	500	581	791	948	573	470	226	209	483	8.8	835



# Shut off butterfly valves, full bore

welding/welding, EN (DIN), DN 300-800,  $\Delta p = 25$  bar, shut-off, with manual gear

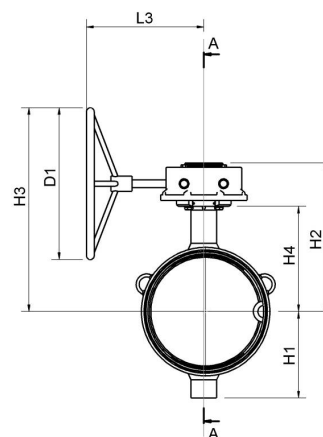
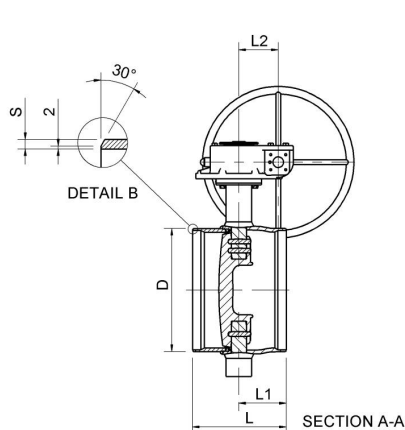
Body: DN 300 - 500 Steel, P235GH (1.0345)  
 DN 600 - 800 Steel, P355NL1 (1.0566)  
 Disc: Stainless steel, GX5CrNiMo19-11-2 (1.4408)  
 Seat: Alloy 825 + HCr plating  
 Shaft: Stainless steel, X3CrNiMoN27-5-2 (1.4460)  
 Shaft seal: FPM  
 Bearings: PTFE + AISI 316 net  
 Welding ends: EN 12627  
 Equipment: Mechanical limiter  
 Operation: Valve is equipped with manual gear.  
 For type and features of manual gear please refer to:  
[www.vexve.com/en/actuators](http://www.vexve.com/en/actuators).



## Operating conditions

Body: PN 25  
 Trim:  $\Delta p = 25$  bar  
 Temperature:  $-40\text{ }^{\circ}\text{C} - +200\text{ }^{\circ}\text{C}$   
 Below  $0\text{ }^{\circ}\text{C}$  contact manufacturer  
 Leakage rate: A or B (EN 12266-1)  
 Depending on requirement

Not for steam



Product no. Vexve	DN	D	D1	H1	H2	H3	H4	L	L1	L2	L3	S	kg
BFS300W2	300	323.9	400	247	411	577	315	270	110	94	261	5.6	71
BFS350W2	350	355.6	400	255	421	587	325	290	134	94	261	5.6	87
BFS400W2	400	406.4	500	285	490	672	347	310	157	130	393	6.3	130
BFS450W2	450	457	400	330	522	654	379	330	153	130	386	6.3	180
BFS500W2	500	508	400	360	551	683	408	350	153	130	386	6.3	214
BFS600W2	600	610	500	440	628	787	450	390	184	140	419	7.1	345
BFS700W2	700	711	400	495	684	784	501	430	203	182	441	8	493
BFS800W2	800	813	500	581	791	948	573	470	226	209	483	8.8	837



# Shut off butterfly valves, full bore

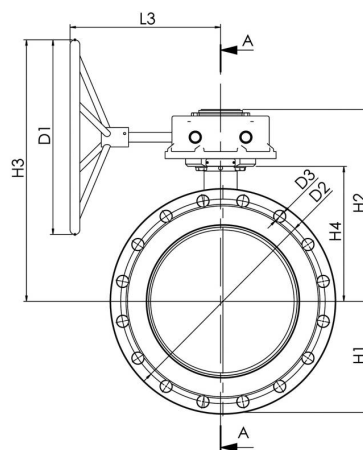
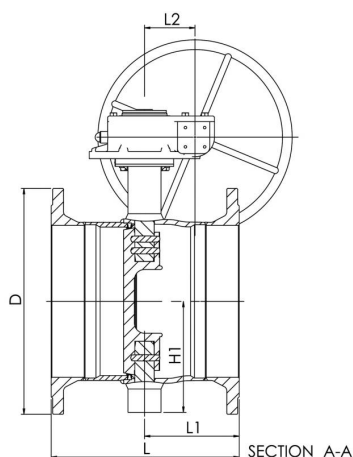
flange/flange, DN 300-800,  $\Delta p = 16$  bar, shut-off, with manual gear

Body:	DN 300 - 500 Steel, P235GH (1.0345) DN 600 - 800 Steel, P355NL1 (1.0566)
Disc:	Stainless steel, GX5CrNiMo19-11-2 (1.4408)
Seat:	Alloy 825 + HCr plating
Shaft:	Stainless steel, X3CrNiMoN27-5-2 (1.4460)
Shaft seal:	FPM
Bearings:	PTFE + AISI 316 net
Flanges:	EN 1092-1 Available PN 16 and 25
Operation:	Valve is equipped with manual gear. For type and features of manual gear please refer to: <a href="http://www.vexve.com/en/actuators">www.vexve.com/en/actuators</a> .



## Operating conditions

Body:	PN 25
Trim:	$\Delta p = 16$ bar
Temperature:	-20 °C – +200 °C Below 0 °C contact manufacturer
Leakage rate:	A (EN 12266-1)
Not for steam	



Product no. Vexve	DN	D	D1	D2	D3	H1	H2	H3	H4	L	L1	L2	L3	Holes	kg
BFS300F1	300	460	400	410	26	247	411	577	315	430	190	94	261	12	113
BFS350F1	350	520	400	470	26	255	421	587	325	458	218	94	261	16	147
BFS400F1	400	580	500	525	30	285	490	672	347	484	244	130	393	16	210
BFS450F1	450	640	400	585	30	330	522	654	399	500	238	130	386	20	269
BFS500F1	500	715	400	650	33	360	551	683	408	522	239	130	386	20	335
BFS600F1	600	840	500	770	36	440	628	787	450	570	274	140	419	20	526
BFS700F1	700	910	400	840	36	495	684	784	501	642	309	182	441	24	678
BFS800F1	800	1025	500	950	39	581	791	948	573	690	336	209	483	24	1070

Dimensions for PN 16 flanges



# Shut off butterfly valves, full bore

flange/flange, DN 300-800,  $\Delta p = 25$  bar, shut-off, with manual gear

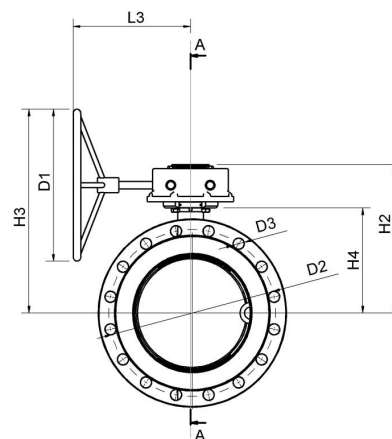
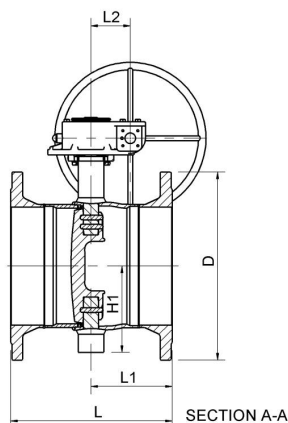
Body:	DN 300 - 500 Steel, P235GH (1.0345) DN 600 - 800 Steel, P355NL1 (1.0566)
Disc:	Stainless steel, GX5CrNiMo19-11-2 (1.4408)
Seat:	Alloy 825 + HCr plating
Shaft:	Stainless steel, X3CrNiMoN27-5-2 (1.4460)
Shaft seal:	FPM
Bearings:	PTFE + AISI 316 net
Flanges:	EN 1092-1 Available PN 16 and 25
Equipment:	Mechanical limiter
Operation:	Valve is equipped with manual gear. For type and features of manual gear please refer to: <a href="http://www.vexve.com/en/actuators">www.vexve.com/en/actuators</a> .



## Operating conditions

Body:	PN 25
Trim:	$\Delta p = 25$ bar
Temperature:	-40 °C – +200 °C Below 0 °C contact manufacturer
Leakage rate:	A or B (EN 12266-1) Depending on requirement

Not for steam



Product no. Vexve	DN	D	D1	D2	D3	H1	H2	H3	H4	L	L1	L2	L3	Holes	kg
BFS300F2	300	485	400	430	30	247	411	577	315	458	204	94	261	16	133
BFS350F2	350	555	400	490	33	255	421	587	325	494	236	94	261	16	179
BFS400F2	400	620	500	550	36	285	490	672	347	534	269	130	393	16	255
BFS450F2	450	670	400	600	36	330	522	654	399	554	265	130	386	20	325
BFS500F2	500	730	400	660	36	360	551	683	408	604	280	130	386	20	405
BFS600F2	600	845	500	770	39	440	628	787	450	644	311	140	419	20	582
BFS700F2	700	960	400	875	42	495	684	784	501	692	334	182	441	24	801
BFS800F2	800	1085	500	990	48	581	791	948	573	750	366	209	483	24	1240

Dimensions for PN 25 flanges

