

# Gas ball valves, reduced bore with gears and actuators

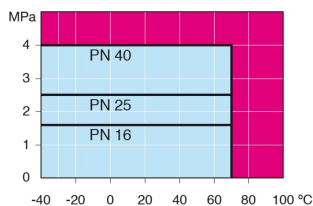
welding/welding, EN (DIN), DN 100-600, with manual gear

Body: DN 10–500 Steel, P235GH (1.0345)  
 DN 600–800 Steel, P355 NL1 (1.0566)/ GP240GH (1.0619)  
 Ball: DN 10–600 Stainless steel, X5CrNi18-10 (1.4301)  
 DN 700–800 Steel + stainless plating, ASTM A350 LF2+Ni  
 Stem: Stainless steel, X8CrNiS18-9 (1.4305)  
 Stem seals: NBR  
 Ball seals: PTFE+C  
 Operation: Valve is equipped with manual gear.  
 For type and features of manual gear please refer to:  
[www.vexve.com/en/actuators](http://www.vexve.com/en/actuators).

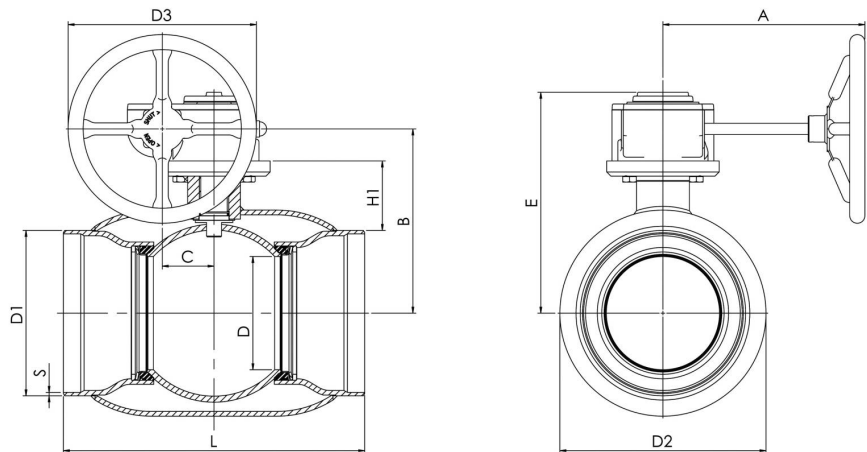


## Operating conditions

-40 °C - +70 °C  
 Over 70 °C contact manufacturer  
 Below -30 °C contact manufacturer



Not for steam



Product no. Vexve	DN	PN	A	B	C	D	D1	D2	D3	E	H1	L	S	kg
114100	100	25	186	196	53	80	114.3	146	125	239	105	325	3.6	18
114125	125	25	224	216	53	100	139.7	177.8	200	258	112	325	4	20
114150	150	25	224	236	53	125	168.3	219.1	200	279	118	350	4.5	25
114200	200	25	268	244	69	150	219.1	273	250	293	92	400	4.5	49
114250	250	25	301	294	97	200	273	355.6	300	345	108	530	5	94
114300	300	25	363	343	117	250	323.9	457	500	412	132	550	5.6	152
114350	350	25	363	418	117	290	355.6	508	500	487	192	686	6.3	212
114400	400	25	444	500	138	340	406.4	610	500	573	242	762	7	293
114500	500	25	475	576	180	390	508	660	500	648	259	914	7	467
114600	600	25	475	643	180	489	610	813	500	714	274	1065	7.1	1025



# Gas ball valves, reduced bore with gears and actuators

welding/welding, EN (DIN), DN 700-800, with manual gear

Body: DN 10–500 Steel, P235GH (1.0345)  
 DN 600–800 Steel, P355 NL1 (1.0566)/ GP240GH (1.0619)  
 Ball: DN 10–600 Stainless steel, X5CrNi18-10 (1.4301)  
 DN 700–800 Steel + stainless plating, ASTM A350 LF2+Ni  
 Stem: Stainless steel, X8CrNiS18-9 (1.4305)  
 Stem seals: NBR  
 Ball seals: PTFE+C  
 Equipment: mounting stand, lifting lugs  
 Operation: Valve is equipped with manual gear.  
 For type and features of manual gear please refer to:  
[www.vexve.com/en/actuators](http://www.vexve.com/en/actuators).

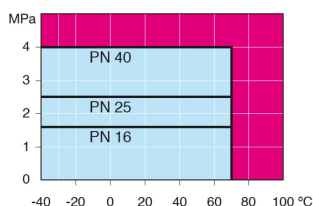


## Operating conditions

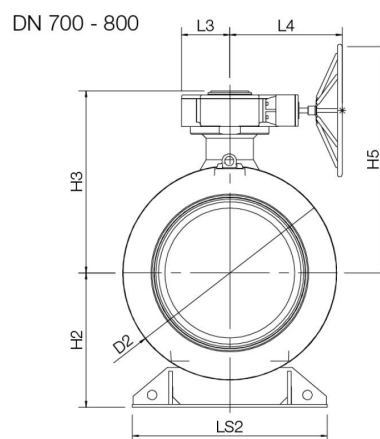
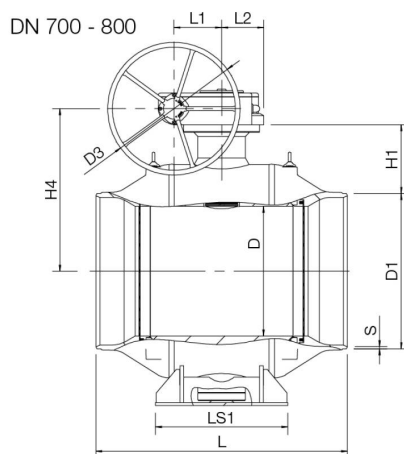
-40 °C - +70 °C

Over 70 °C contact manufacturer

Below -30 °C contact manufacturer



Not for steam



Product no. Vexve	DN	PN	D	D1	D2	D3	H1	H2	H3	H4	H5	L	L1	L2	L3	L4	LS1	LS2	S	kg
114700	700	25	589	712	965	700	337	616	881	778	1128	1205	253	222	255	593	560	965	8	2700
114800	800	25	684	813.6	1125	700	366	709	961	858	1208	1330	253	222	255	593	700	1028	8.8	4050



# Gas ball valves, reduced bore with gears and actuators

flange/flange, DN 100-600, with manual gear

Body:	DN 10-500 Steel, P235GH (1.0345) DN 600-800 Steel, P355 NL1 (1.0566)/ GP240GH (1.0619)
Ball:	DN 10-600 Stainless steel, X5CrNi18-10 (1.4301) DN 700-800 Steel + stainless plating, ASTM A350 LF2+Ni
Stem:	Stainless steel, X8CrNiS18-9 (1.4305)
Stem seals:	NBR
Ball seals:	PTFE+C
Flanges:	EN 1092-1 Available PN 10, 16, 25, 40
Length:	EN 558-1 (DIN 3202) DN 15-200
Operation:	Valve is equipped with manual gear. For type and features of manual gear please refer to: <a href="http://www.vexve.com/en/actuators">www.vexve.com/en/actuators</a> .

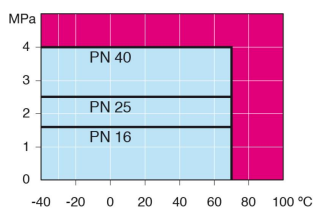


## Operating conditions

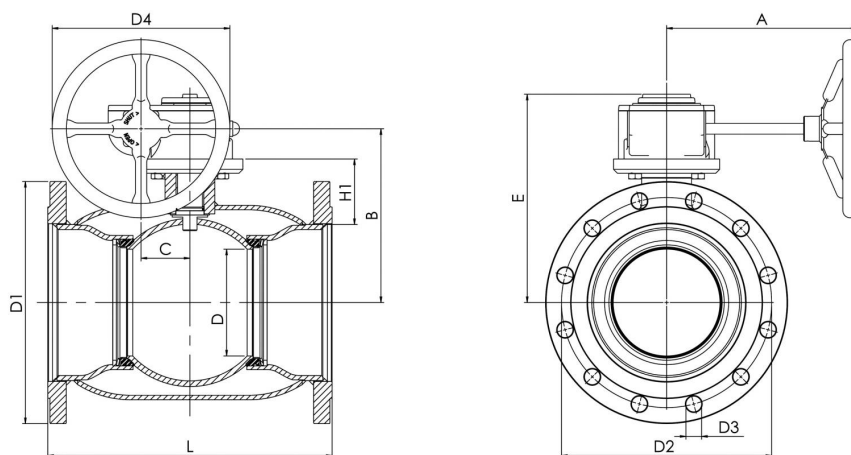
-40°C - +70 °C

Over 70 °C contact manufacturer

Below -30 °C contact manufacturer



Not for steam



Product no. Vexve	DN	PN	A	B	C	D	D1	D2	D3	D4	E	H1	L	Holes	kg
114101	100	16	186	206	53	80	220	180	18	125	248	114	300	8	23
114126	125	16	224	216	53	100	250	210	18	200	258	112	325	8	30
114151	150	16	224	236	53	125	285	240	22	200	279	118	350	8	37
114201	200	16	268	244	69	150	340	295	22	250	293	92	400	12	68
114251	250	16	301	294	97	200	405	355	26	300	345	108	500	12	122
114301	300	16	363	343	118	250	460	410	26	500	412	115	500	12	190
114351	350	16	363	418	118	290	520	470	26	500	487	192	706	16	268
114401	400	16	440	500	138	340	580	525	30	500	573	242	810	16	365
114501	500	16	471	576	180	390	715	650	33	500	648	259	978	20	595
114601	600	16	471	643	180	489	840	770	36	500	714	260	1130	20	1230



# Gas ball valves, reduced bore with gears and actuators

flange/flange, DN 700-800, with manual gear

Body:	DN 10-500 Steel, P235GH (1.0345) DN 600-800 Steel, P355 NL1 (1.0566)/ GP240GH (1.0619)
Ball:	DN 10-600 Stainless steel, X5CrNi18-10 (1.4301) DN 700-800 Steel + stainless plating, ASTM A350 LF2+Ni
Stem:	Stainless steel, X8CrNiS18-9 (1.4305)
Stem seals:	NBR
Ball seals:	PTFE+C
Flanges:	EN 1092-1 Available PN 10, 16, 25, 40
Length:	EN 558-1 (DIN 3202) DN 15-200
Equipment:	mounting stand, lifting lugs
Operation:	Valve is equipped with manual gear. For type and features of manual gear please refer to: <a href="http://www.vexve.com/en/actuators">www.vexve.com/en/actuators</a> .

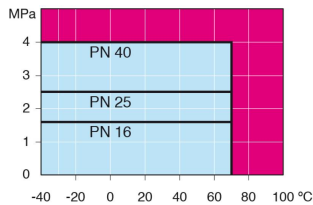


## Operating conditions

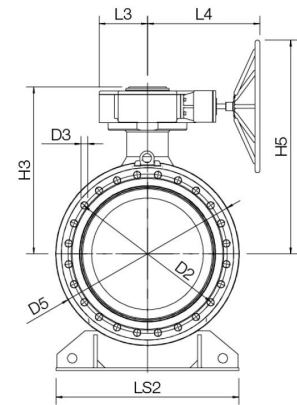
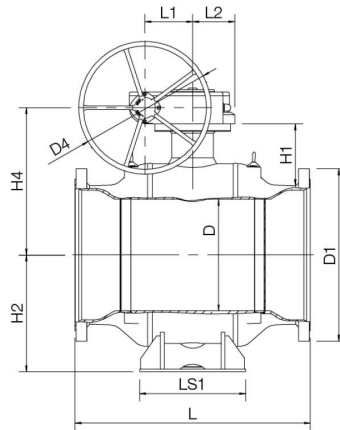
-40 °C - +70 °C

Over 70 °C contact manufacturer

Below -30 °C contact manufacturer



Not for steam



Product no. Vexve	DN	PN	D	D1	D2	D3	D4	D5	H1	H2	H3	H4	H5	L	L1	L2	L3	L4	LS1	LS2	Holes	kg
114701	700	16	589	910	840	36	700	965	325	616	881	778	1128	1245	253	222	255	593	560	965	24	2900
114801	800	16	684	1025	950	39	700	1125	358	694	961	858	1208	1385	253	222	255	593	700	1028	24	4200

