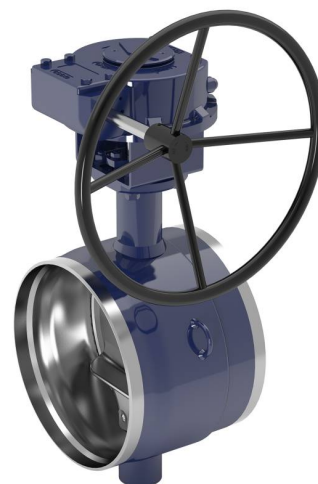


Control and shut off butterfly valves, full bore

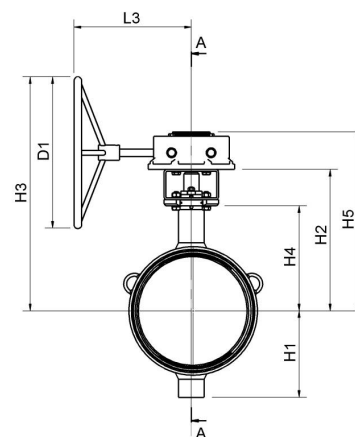
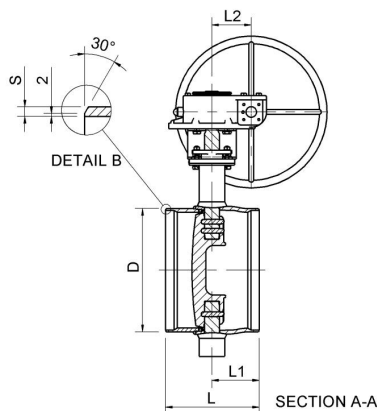
welding/welding, EN (DIN), DN 300-800, $\Delta p = 16$ bar, control, with manual gear

Body: DN 300 - 500 Steel, P235GH (1.0345)
 DN 600 - 800 Steel, P355NL1 (1.0566)
 Disc: Stainless steel, GX5CrNiMo19-11-2 (1.4408)
 Seat: Alloy 825 + HCr plating
 Shaft: Stainless steel, X3CrNiMoN27-5-2 (1.4460)
 Shaft seal: Graphite
 Bearings: PTFE + AISI 316 net
 Welding ends: EN 12627
 Operation: Valve is equipped with manual gear.
 For type and features of manual gear please refer to:
www.vexve.com/en/actuators.



Operating conditions

Body: PN 25
 Trim: $\Delta p = 16$ bar
 Temperature: $-40\text{ }^{\circ}\text{C} - +250\text{ }^{\circ}\text{C}$
 Leakage rate: A (EN 12266-1)



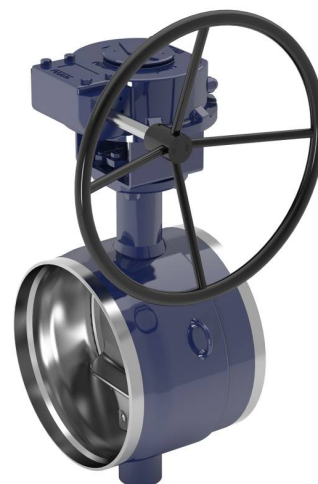
Product no. Vexve	DN	D	D1	H1	H2	H3	H4	H5	L	L1	L2	L3	S	kg
BFC300W1	300	323.9	400	247	435	677	315	511	270	110	94	261	5.6	76
BFC350W1	350	355.6	400	255	445	687	325	521	290	134	94	261	5.6	89
BFC400W1	400	406.4	500	285	467	772	347	590	310	157	130	393	6.3	136
BFC450W1	450	457	400	330	499	754	379	622	330	153	130	386	6.3	183
BFC500W1	500	508	400	360	528	783	408	651	350	153	130	386	6.3	222
BFC600W1	600	610	500	440	575	887	450	728	390	184	140	419	7.1	357
BFC700W1	700	711	400	495	625	884	501	784	430	203	182	441	8	504
BFC800W1	800	813	500	581	733	1068	573	911	470	226	209	483	8.8	864



Control and shut off butterfly valves, full bore

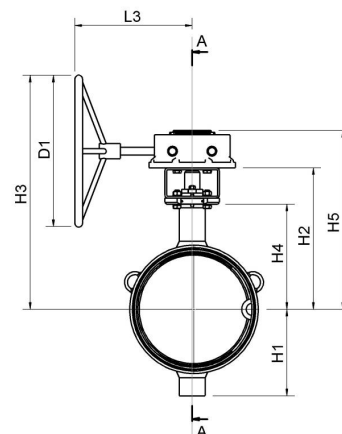
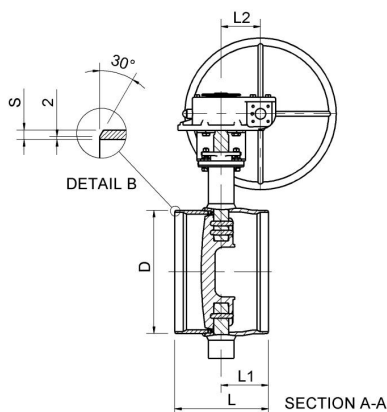
welding/welding, EN (DIN), DN 300-800, $\Delta p = 25$ bar, control, with manual gear

Body: DN 300 - 500 Steel, P235GH (1.0345)
 DN 600 - 800 Steel, P355NL1 (1.0566)
 Disc: Stainless steel, GX5CrNiMo19-11-2 (1.4408)
 Seat: Alloy 825 + HCr plating
 Shaft: Stainless steel, X3CrNiMoN27-5-2 (1.4460)
 Shaft seal: Graphite
 Bearings: PTFE + AISI 316 net
 Welding ends: EN 12627
 Equipment: Mechanical limiter
 Operation: Valve is equipped with manual gear.
 For type and features of manual gear please refer to:
www.vexve.com/en/actuators.



Operating conditions

Body: PN 25
 Trim: $\Delta p = 25$ bar
 Temperature: $-40\text{ }^{\circ}\text{C} - +250\text{ }^{\circ}\text{C}$
 Below $0\text{ }^{\circ}\text{C}$ contact manufacturer
 Leakage rate: A or B (EN 12266-1)
 Depending on requirement



Product no. Vexve	DN	D	D1	H1	H2	H3	H4	H5	L	L1	L2	L3	S	kg
BFC300W2	300	323.9	400	247	435	677	315	511	270	110	94	261	5.6	76
BFC350W2	350	355.6	400	255	445	687	325	521	290	134	94	261	5.6	90
BFC400W2	400	406.4	500	285	467	772	347	590	310	157	130	393	6.3	137
BFC450W2	450	457	400	330	499	754	379	622	330	153	130	386	6.3	185
BFC500W2	500	508	400	360	528	783	408	651	350	153	130	386	6.3	223
BFC600W2	600	610	500	440	575	887	450	728	390	184	140	419	7.1	358
BFC700W2	700	711	400	495	625	884	501	784	430	203	182	441	8	506
BFC800W2	800	813	500	581	733	1068	573	911	470	226	209	483	8.8	866



Control and shut off butterfly valves, full bore

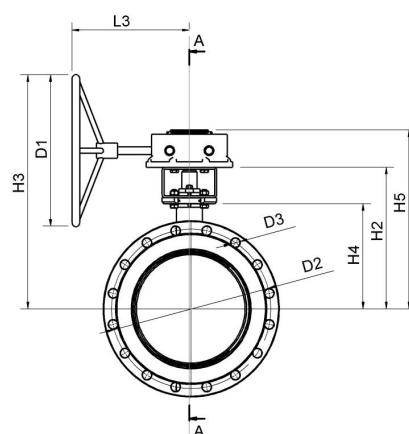
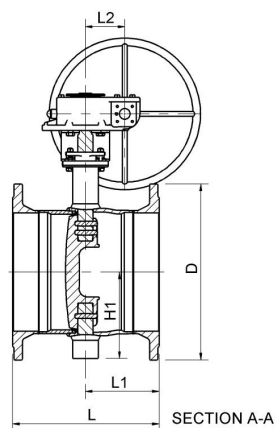
flange/flange, DN 300-800, $\Delta p = 16$ bar, control, with manual gear

Body: DN 300 - 500 Steel, P235GH (1.0345)
 DN 600 - 800 Steel, P355NL1 (1.0566)
 Disc: Stainless steel, GX5CrNiMo19-11-2 (1.4408)
 Seat: Alloy 825 + HCr plating
 Shaft: Stainless steel, X3CrNiMoN27-5-2 (1.4460)
 Shaft seal: Graphite
 Bearings: PTFE + AISI 316 net
 Flanges: EN 1092-1 Available PN 16 and 25
 Operation: Valve is equipped with manual gear.
 For type and features of manual gear please refer to:
www.vexve.com/en/actuators.



Operating conditions

Body: PN 25
 Trim: $\Delta p = 16$ bar
 Temperature: $-20\text{ }^{\circ}\text{C} - +250\text{ }^{\circ}\text{C}$
 Leakage rate: A (EN 12266-1)



Product no. Vexve	DN	D	D1	D2	D3	H1	H2	H3	H4	H5	L	L1	L2	L3	Holes	kg
BFC300F1	300	460	400	410	26	247	435	677	315	511	430	190	94	261	12	119
BFC350F1	350	520	400	470	26	255	445	687	325	521	458	218	94	261	16	153
BFC400F1	400	580	500	525	30	285	467	772	347	590	484	244	130	393	16	216
BFC450F1	450	640	400	585	30	330	499	754	379	622	500	238	130	386	20	277
BFC500F1	500	715	400	650	33	360	528	783	408	651	522	239	130	386	20	344
BFC600F1	600	840	500	770	36	440	575	887	450	728	570	274	140	419	20	541
BFC700F1	700	910	400	840	36	495	625	884	501	784	642	309	182	441	24	694
BFC800F1	800	1025	500	950	39	581	733	1068	573	911	690	336	209	483	24	1105

Dimensions for PN 16 flanges



Control and shut off butterfly valves, full bore

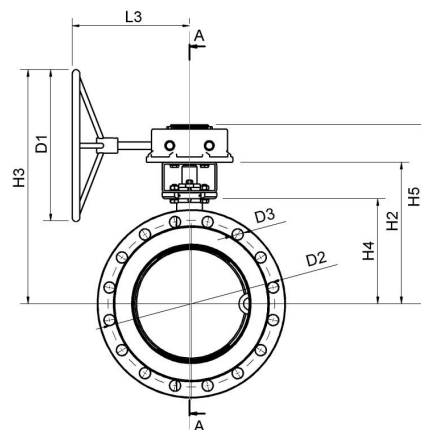
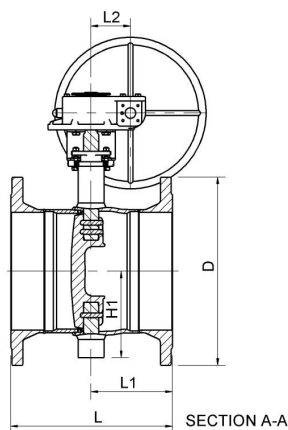
flange/flange, DN 300-800, $\Delta p = 25$ bar, control, with manual gear

Body:	DN 300 - 500 Steel, P235GH (1.0345) DN 600 - 800 Steel, P355NL1 (1.0566)
Disc:	Stainless steel, GX5CrNiMo19-11-2 (1.4408)
Seat:	Alloy 825 + HCr plating
Shaft:	Stainless steel, X3CrNiMoN27-5-2 (1.4460)
Shaft seal:	Graphite
Bearings:	PTFE + AISI 316 net
Flanges	EN 1092-1 Available PN 16 and 25
Equipment:	Mechanical limiter
Operation:	Valve is equipped with manual gear. For type and features of manual gear please refer to: www.vexve.com/en/actuators .



Operating conditions

Body:	PN 25
Trim:	$\Delta p = 25$ bar
Temperature:	-20 °C – +250 °C Below 0 °C contact manufacturer
Leakage rate:	A or B (EN 12266-1) Depending on requirement



Product no. Vexve	DN	D	D1	D2	D3	H1	H2	H3	H4	H5	L	L1	L2	L3	Holes	kg
BFC300F2	300	485	400	430	30	247	435	677	315	511	458	204	94	261	16	138
BFC350F2	350	555	400	490	33	255	445	687	325	521	494	236	94	261	16	185
BFC400F2	400	620	500	550	36	285	467	772	347	590	534	269	130	393	16	261
BFC450F2	450	670	400	600	36	330	499	754	379	622	554	265	130	386	20	333
BFC500F2	500	730	400	660	36	360	528	783	408	651	604	280	130	386	20	414
BFC600F2	600	845	500	770	39	440	575	887	450	728	644	311	140	419	20	597
BFC700F2	700	960	400	875	42	495	625	884	501	784	692	334	182	441	24	818
BFC800F2	800	1085	500	990	48	581	733	1068	573	911	750	366	209	483	24	1275

Dimensions for PN 25 flanges

