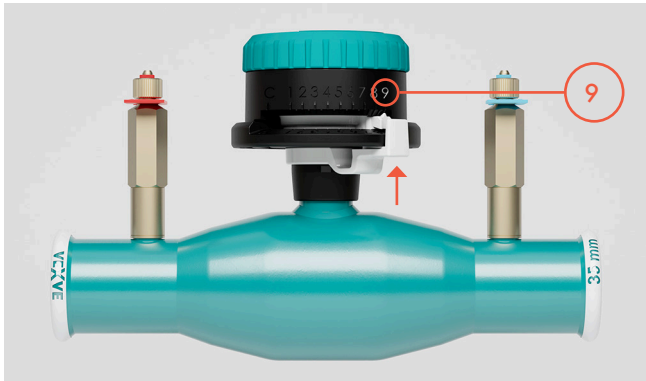
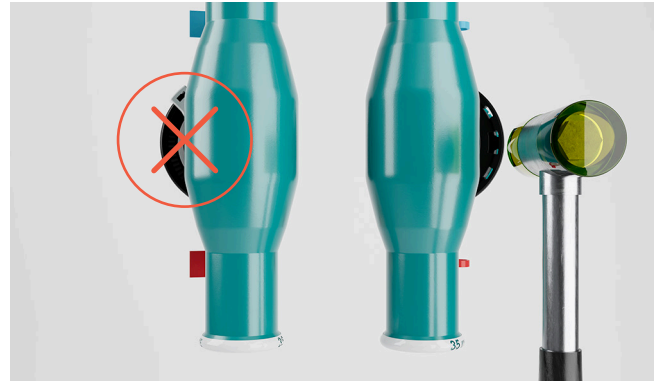


# How to turn the flow direction

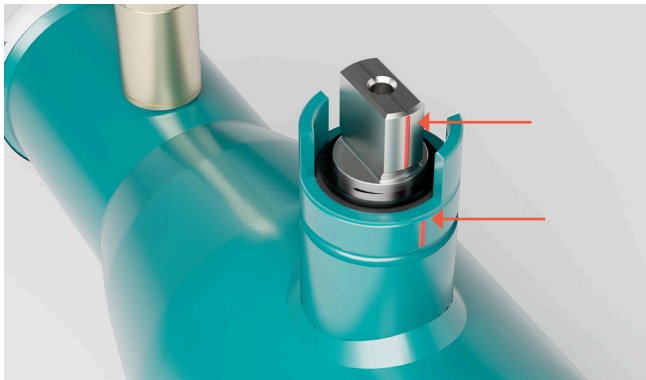
Instructions how to turn the flow direction of Vexve X-Series balancing valve that is already installed to the pipeline (DN 15–50)



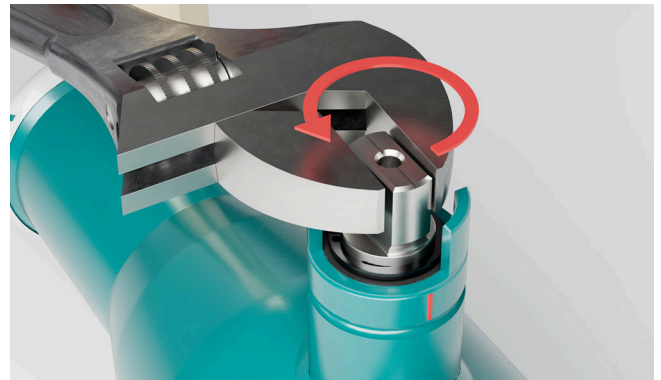
1 Turn the valve to the fully open position = position 9



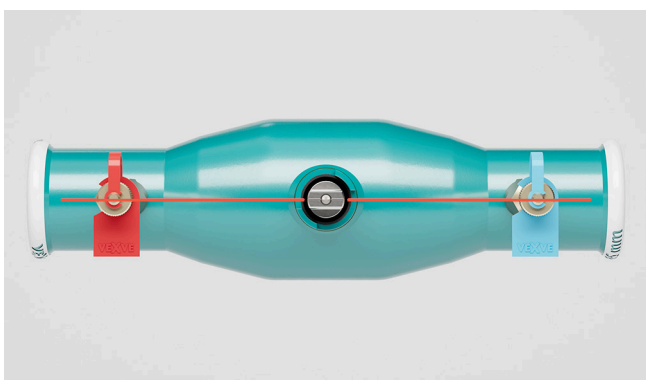
2 Use a small hammer to remove the control knob by tapping carefully only on the opposite side of the scale near the stem. Do not use too much force!



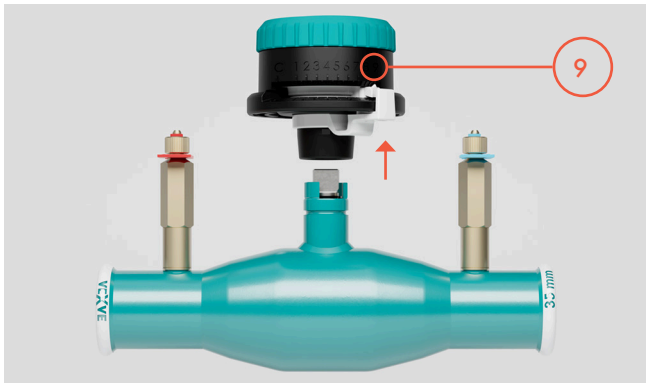
3 Mark the position of the stem in middle of the 2k top of the stem and on the stem bush.



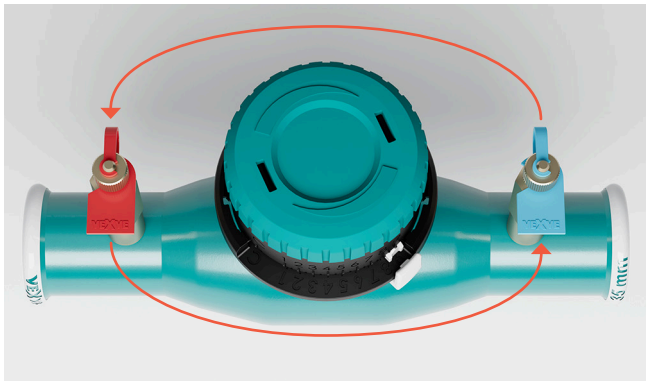
4 Use a wrench to turn the stem 180-degrees. The marking on the top of the 2k is now on the other side of the stem bush.



5 Check that the "strait line marking" on the top of the 2k is in line with the valve after the turn of 180°.



6 Install the control knob back to the stem. Check that control knob remains in fully open in position 9 and scale remains on the same side of the valve. In the first phase the 2k top of the stem will enter adapter inside of the control knob. After this the anti-rotation part of stem bush will enter control knob. You may need to rotate the whole control knob just a little. Push control knob all the way down on top of the stem and stem bush. Check that control knob is working open/close.



7 The measuring points: Change the red (higher pressure) and blue (lower pressure) measuring point caps or only the plastic tags on the caps according the correct flow direction

DN 32 (35 mm) PN 16	DN 32 (35 mm) PN 16
Material: 1.0345	Material: 1.0345
Tmin...Tmax: -20...120 °C	Tmin...Tmax: -20...120 °C
Product no: 148032X	Product no: 148032X
LVI-no: 4011627	LVI-no: 4011627

Direction on flow →

← Direction on flow

8 On the valve sticker located on the valve body the flow direction arrow must be changed according to the correct flow direction. New valve stickers can be received from Vexve. [vexve.customer@vexve.com](mailto:vexve.customer@vexve.com)