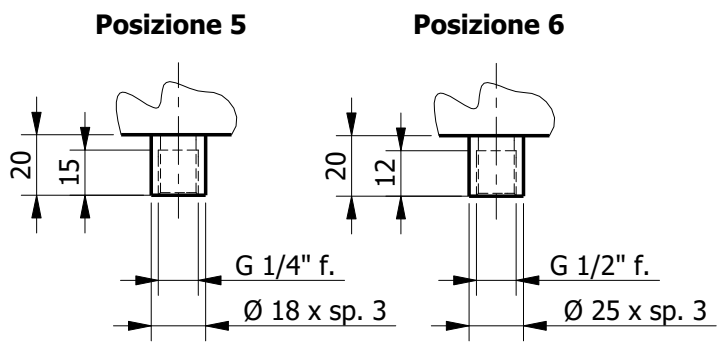


| TIPO | ØA | DN | ØB | ØC | D |
|----------|----------------|-----|--------|---------|----|
| M500/250 | 139.7 x 3 (5") | 125 | 76.1x3 | G2" 1/2 | 25 |
| M500/300 | 139.7 x 3 (5") | 125 | 88.9x3 | G3" | 30 |
| M600/250 | 168.3 x 3 (6") | 150 | 76.1x3 | G2" 1/2 | 25 |
| M600/300 | 168.3 x 3 (6") | 150 | 88.9x3 | G3" | 30 |

| 6 | MANICOTTO G 1/2" f. | 1 | AISI 304 | |
|------|---------------------|------|-----------|---------|
| 5 | MANICOTTO G 1/4" f. | 3 | AISI 304 | |
| 4 | MANICOTTO G 1" f. | 3 | AISI 304 | |
| 3 | RACCORDO | 3 | AISI 304 | |
| 2 | FLANGIA A SALDARE | 2 | AISI 304 | |
| 1 | CORPO COLLETTORE | 1 | AISI 304 | |
| Pos. | Descrizione | Q.tà | Materiale | N. dis. |



NOTE:
 - Filettature Gas secondo UNI ISO 228/1
 - Filettature coniche secondo UNI EN 10226-1-2
 - Saldature a tig a tenuta stagna

NOTES:
 - Gas threadings according UNI ISO 228/1
 - Tapered threadings according UNI EN 10226-1-2
 - Steel welded components with tig method

| TOLLERANZE GENERALI / GENERAL TOLERANCES | SCALA / SCALE | | | | | |
|--|---------------|---------|----------|------------|-------------|--------------|
| | fino a 3 | > 3 a 6 | > 6 a 30 | > 30 a 120 | > 120 a 400 | > 400 a 1000 |
| PLASTICA / PLASTIC | ±0.15 | ±0.17 | ±0.25 | ±0.4 | ±1 | ±2.5 |
| METALLO / METAL | ±0.05 | ±0.05 | ±0.1 | ±0.15 | ±0.2 | ±0.3 |
| METALLO / METAL | ±0.1 | ±0.1 | ±0.2 | ±0.3 | ±0.5 | ±0.8 |
| METALLO / METAL | X ±0.2 | ±0.3 | ±0.5 | ±0.8 | ±1.2 | ±2 |

| | | |
|---|------------------------------|-------------|
| MATERIALE / MATERIAL | DISEGN. / DRAW | DATA / DATE |
| AISI 304 | ZANNI R. | 20/12/2022 |
| TRATT. TERMICO E/O SUPERF. / HEAT/SUPERFICIAL TREATMENT | CONTR. / CHECK | DATA / DATE |
| ELETTROLUCIDATURA | SOSTITUISCE IL/SUBSTITUTES | |
| | SOSTITUITO DA/SUBSTITUTED BY | |
| Referred to law terms, MONDEO SRL reserves the ownership on this drawing and prohibits to reproduce or communicate it without authorization | | |

MONDEO

DESCRIZIONE / DESCRIPTION

DELIVERY MANIFOLD 3P

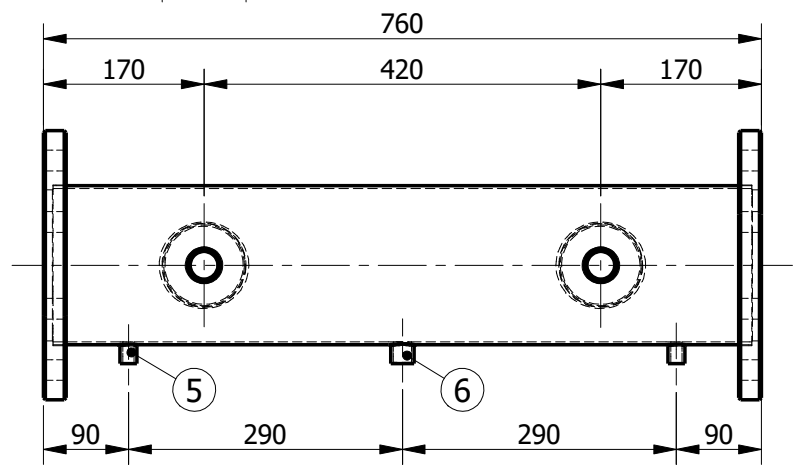
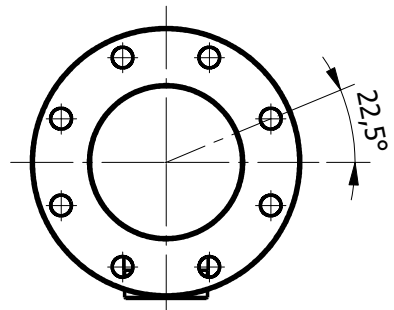
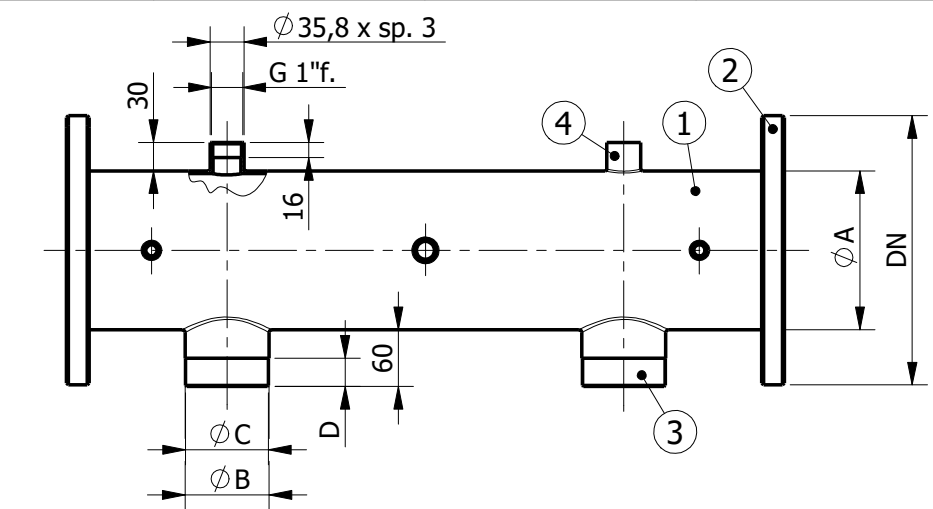
DIMENSIONI IN mm / DIMENSIONS IN mm

CODICE / CODE

0

DISEGNO / DRAWING

06N2222-00

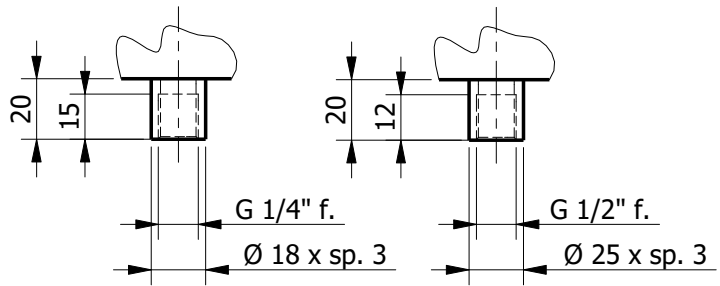


| TIPO | ØA | DN | ØB | ØC | D |
|----------|----------------|-----|--------|---------|----|
| M500/250 | 139.7 x 3 (5") | 125 | 76.1x3 | G2" 1/2 | 25 |
| M500/300 | 139.7 x 3 (5") | 125 | 88.9x3 | G3" | 30 |
| M600/250 | 168.3 x 3 (6") | 150 | 76.1x3 | G2" 1/2 | 25 |
| M600/300 | 168.3 x 3 (6") | 150 | 88.9x3 | G3" | 30 |

| 6 | MANICOTTO G 1/2" f. | 1 | AISI 304 | |
|------|---------------------|------|-----------|---------|
| 5 | MANICOTTO G 1/4" f. | 2 | AISI 304 | |
| 4 | MANICOTTO G 1" f. | 2 | AISI 304 | |
| 3 | RACCORDO | 2 | AISI 304 | |
| 2 | FLANGIA A SALDARE | 2 | AISI 304 | |
| 1 | CORPO COLLETTORE | 1 | AISI 304 | |
| Pos. | Descrizione | Q.tà | Materiale | N. dis. |

Posizione 5

Posizione 6



NOTE:
 - Filettature Gas secondo UNI ISO 228/1
 - Filettature coniche secondo UNI EN 10226-1-2
 - Saldature a tig a tenuta stagna

NOTES:
 - Gas threadings according UNI ISO 228/1
 - Tapered threadings according UNI EN 10226-1-2
 - Steel welded components with tig method

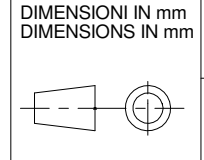
| SCALA SCALE | | fino a 3 | > 3 a 6 | > 6 a 30 | > 30 a 120 | > 120 a 400 | > 400 a 1000 |
|--|------------------|----------|---------|----------|------------|-------------|--------------|
| TOLLERANZE GENERALI GENERAL TOLERANCES | PLASTICA PLASTIC | ±0.15 | ±0.17 | ±0.25 | ±0.4 | ±1 | ±2.5 |
| | METALLO METAL | ±0.05 | ±0.05 | ±0.1 | ±0.15 | ±0.2 | ±0.3 |
| | METALLO METAL | ±0.1 | ±0.1 | ±0.2 | ±0.3 | ±0.5 | ±0.8 |
| | METALLO METAL | X ±0.2 | ±0.3 | ±0.5 | ±0.8 | ±1.2 | ±2 |

| | | |
|---|------------------------------|------------|
| MATERIALE / MATERIAL | DISEGN. DRAW | DATA DATE |
| AISI 304 | ZANNI R. | 22/12/2022 |
| TRATT. TERMICO E/O SUPERF. HEAT/SUPERFICIAL TREATMENT | CONTR. CHECK | DATA DATE |
| ELETTROLUCIDATURA | SOSTITUISCE IL/SUBSTITUTES | |
| | SOSTITUITO DA/SUBSTITUTED BY | |
| Referred to law terms, MONDEO SRL reserves the ownership on this drawing and prohibits to reproduce or communicate it without authorization | | |



DESCRIZIONE / DESCRIPTION

DELIVERY MANIFOLD 2P



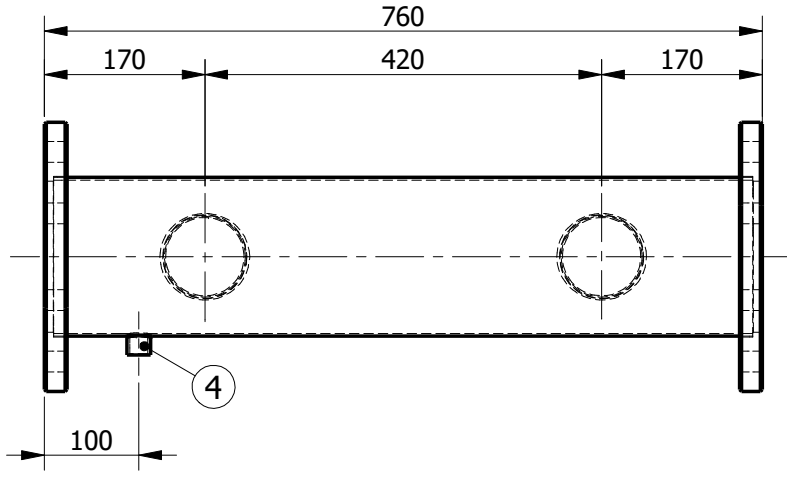
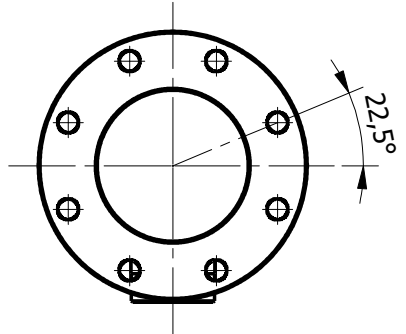
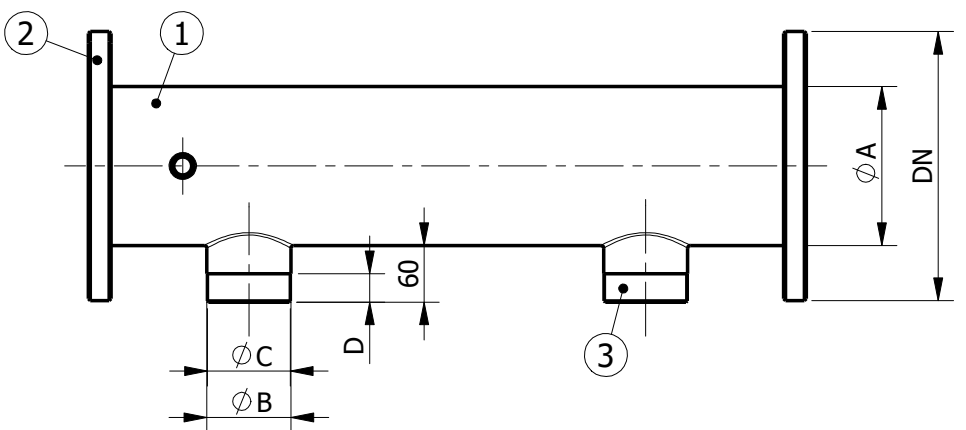
DIMENSIONI IN mm DIMENSIONS IN mm

CODICE / CODE

0

DISEGNO / DRAWING

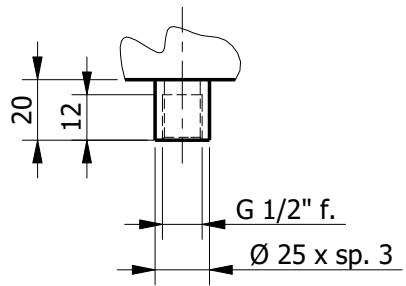
06N2226-00



| TIPO | ØA | DN | ØB | ØC | D |
|----------|----------------|-----|--------|---------|----|
| A500/250 | 139.7 x 3 (5") | 125 | 76.1x3 | G2" 1/2 | 25 |
| A500/300 | 139.7 x 3 (5") | 125 | 88.9x3 | G3" | 30 |
| A600/250 | 168.3 x 3 (6") | 150 | 76.1x3 | G2" 1/2 | 25 |
| A600/300 | 168.3 x 3 (6") | 150 | 88.9x3 | G3" | 30 |

| 4 | MANICOTTO G 1/2" f. | 1 | AISI 304 | |
|------|---------------------|------|-----------|---------|
| 3 | RACCORDO | 2 | AISI 304 | |
| 2 | FLANGIA A SALDARE | 2 | AISI 304 | |
| 1 | CORPO COLLETTORE | 1 | AISI 304 | |
| Pos. | Descrizione | Q.tà | Materiale | N. dis. |

Posizione 4



NOTE:
 - Filettature Gas secondo UNI ISO 228/1
 - Filettature coniche secondo UNI EN 10226-1-2
 - Saldature a tig a tenuta stagna

NOTES:
 - Gas threadings according UNI ISO 228/1
 - Tapered threadings according UNI EN 10226-1-2
 - Steel welded components with tig method

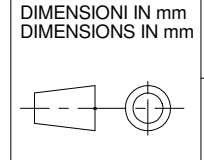
| TOLLERANZE GENERALI / GENERAL TOLERANCES | SCALA / SCALE | | | | | |
|--|---------------|---------|----------|------------|-------------|--------------|
| | fino a 3 | > 3 a 6 | > 6 a 30 | > 30 a 120 | > 120 a 400 | > 400 a 1000 |
| PLASTICA / PLASTIC | ±0.15 | ±0.17 | ±0.25 | ±0.4 | ±1 | ±2.5 |
| METALLO / METAL | ±0.05 | ±0.05 | ±0.1 | ±0.15 | ±0.2 | ±0.3 |
| METALLO / METAL | ±0.1 | ±0.1 | ±0.2 | ±0.3 | ±0.5 | ±0.8 |
| METALLO / METAL | X ±0.2 | ±0.3 | ±0.5 | ±0.8 | ±1.2 | ±2 |

| | | |
|---|------------------------------|-------------|
| MATERIALE / MATERIAL | DISEGN. / DRAW | DATA / DATE |
| AISI 304 | ZANNI R. | 22/12/2022 |
| TRATT. TERMICO E/O SUPERF. / HEAT/SUPERFICIAL TREATMENT | CONTR. / CHECK | DATA / DATE |
| ELETTROLUCIDATURA | SOSTITUISCE IL/SUBSTITUTES | |
| | SOSTITUITO DA/SUBSTITUTED BY | |
| Referred to law terms, MONDEO SRL reserves the ownership on this drawing and prohibits to reproduce or communicate it without authorization | | |



DESCRIZIONE / DESCRIPTION

SUCTION MANIFOLD 2P



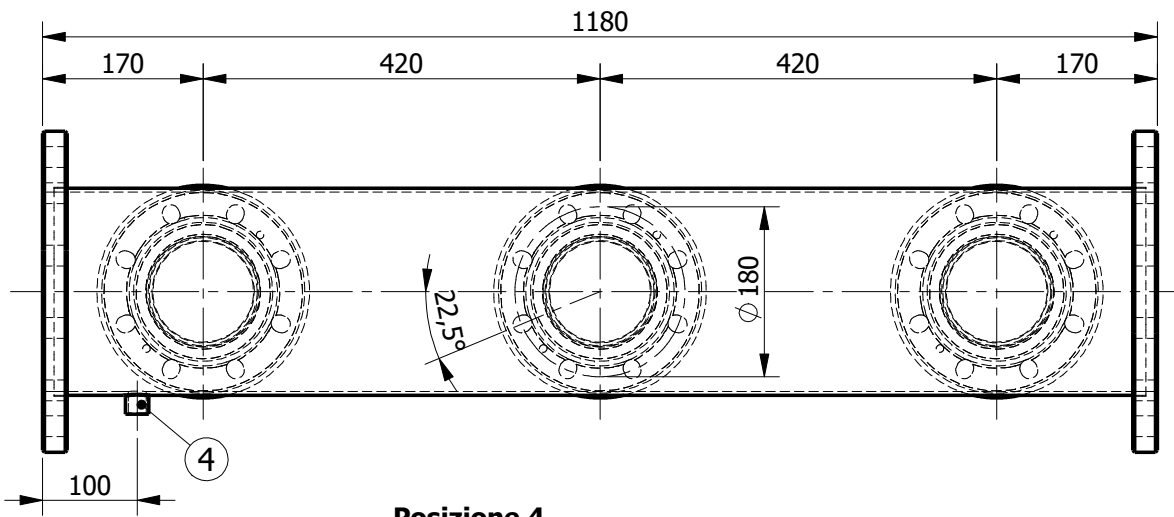
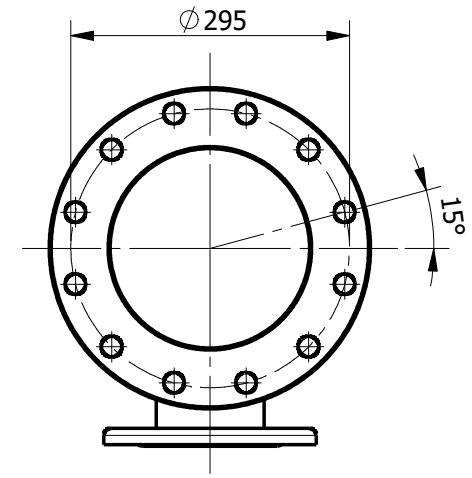
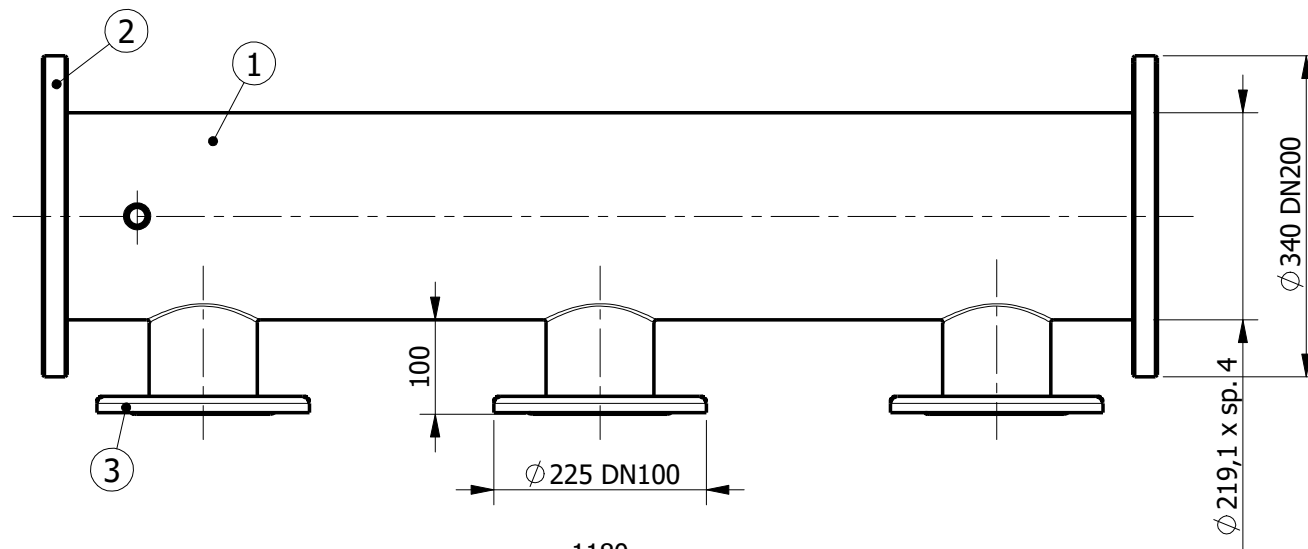
DIMENSIONI IN mm / DIMENSIONS IN mm

CODICE / CODE

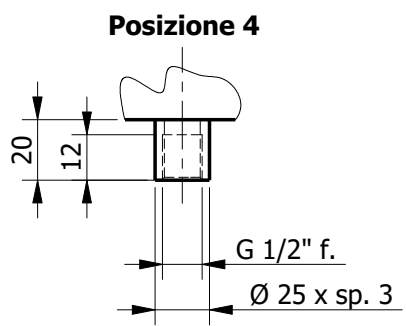
0

DISEGNO / DRAWING

06N2227-00



| Pos. | Descrizione | Q.tà | Materiale | N. dis. |
|------|-------------------------|------|-----------|---------|
| 4 | MANICOTTO G 1/2" f. | 1 | AISI 304 | |
| 3 | FLANGIA DN100 A SALDARE | 3 | AISI 304 | |
| 2 | FLANGIA DN200 A SALDARE | 2 | AISI 304 | |
| 1 | CORPO COLLETTORE | 1 | AISI 304 | |



NOTE:
 - Filettature Gas secondo UNI ISO 228/1
 - Filettature coniche secondo UNI EN 10226-1-2
 - Saldature a tig a tenuta stagna

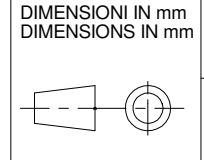
NOTES:
 - Gas threadings according UNI ISO 228/1
 - Tapered threadings according UNI EN 10226-1-2
 - Steel welded components with tig method

| TOLLERANZE GENERALI GENERAL TOLERANCES | SCALA SCALE | | | | | |
|---|-------------|---------|----------|------------|-------------|--------------|
| | fino a 3 | > 3 a 6 | > 6 a 30 | > 30 a 120 | > 120 a 400 | > 400 a 1000 |
| PLASTICA PLASTIC | ±0.15 | ±0.17 | ±0.25 | ±0.4 | ±1 | ±2.5 |
| METALLO METAL | ±0.05 | ±0.05 | ±0.1 | ±0.15 | ±0.2 | ±0.3 |
| METALLO METAL | ±0.1 | ±0.1 | ±0.2 | ±0.3 | ±0.5 | ±0.8 |
| METALLO METAL | X ±0.2 | ±0.3 | ±0.5 | ±0.8 | ±1.2 | ±2 |

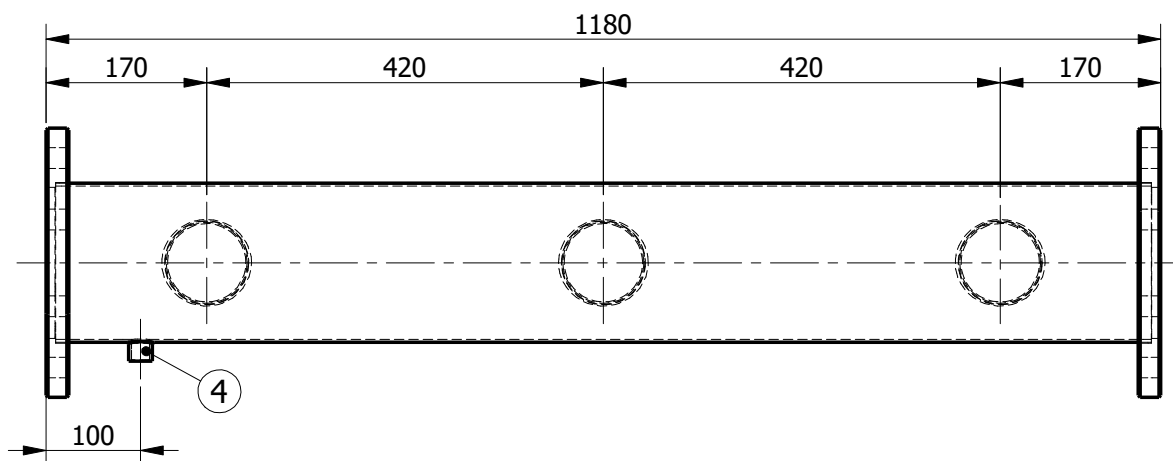
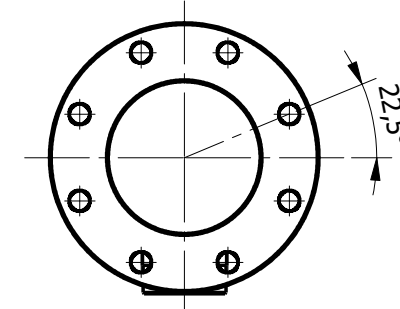
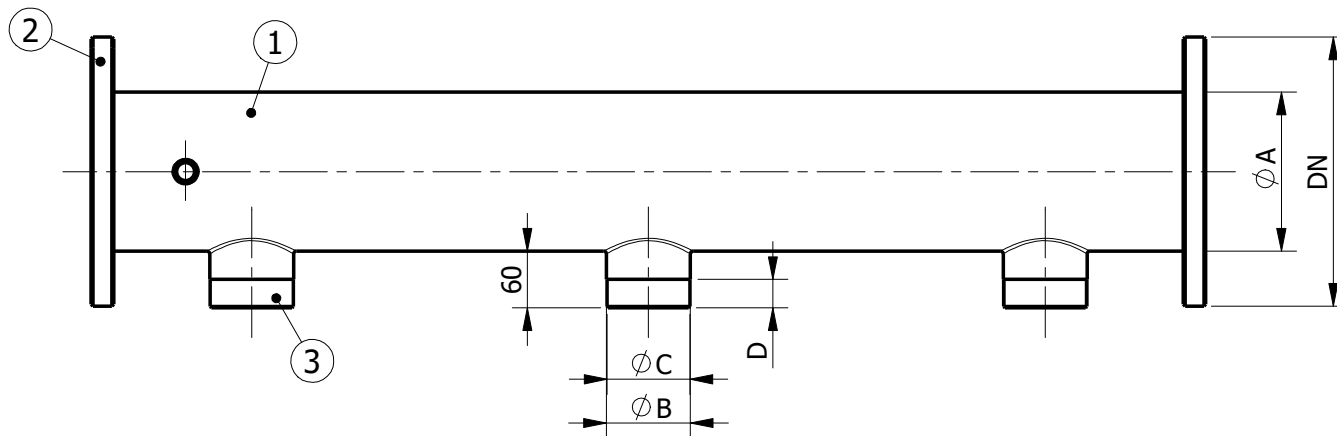
| | | |
|---|------------------------------|------------|
| MATERIALE / MATERIAL | DISEGN. DRAW | DATA DATE |
| AISI 304 | ZANNI R. | 21/12/2022 |
| TRATT. TERMICO E/O SUPERF. HEAT/SUPERFICIAL TREATMENT | CONTR. CHECK | DATA DATE |
| ELETTROLUCIDATURA | SOSTITUISCE IL/SUBSTITUTES | |
| | SOSTITUITO DA/SUBSTITUTED BY | |
| Referred to law terms, MONDEO SRL reserves the ownership on this drawing and prohibits to reproduce or communicate it without authorization | | |



DESCRIZIONE / DESCRIPTION
**SUCTION MANIFOLD
 DN 200 3P**



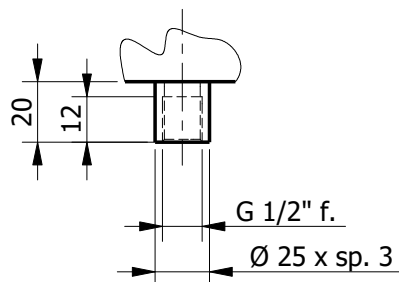
DIMENSIONI IN mm / DIMENSIONS IN mm
 CODICE / CODE: **0**
 DISEGNO / DRAWING: **06N2225-00**



| TIPO | ØA | DN | ØB | ØC | D |
|----------|----------------|-----|--------|---------|----|
| A500/250 | 139.7 x 3 (5") | 125 | 76.1x3 | G2" 1/2 | 25 |
| A500/300 | 139.7 x 3 (5") | 125 | 88.9x3 | G3" | 30 |
| A600/250 | 168.3 x 3 (6") | 150 | 76.1x3 | G2" 1/2 | 25 |
| A600/300 | 168.3 x 3 (6") | 150 | 88.9x3 | G3" | 30 |

| 4 | MANICOTTO G 1/2" f. | 1 | AISI 304 | |
|------|---------------------|------|-----------|---------|
| 3 | RACCORDO | 3 | AISI 304 | |
| 2 | FLANGIA A SALDARE | 2 | AISI 304 | |
| 1 | CORPO COLLETTORE | 1 | AISI 304 | |
| Pos. | Descrizione | Q.tà | Materiale | N. dis. |

Posizione 4



NOTE:

- Filettature Gas secondo UNI ISO 228/1
- Filettature coniche secondo UNI EN 10226-1-2
- Saldature a tig a tenuta stagna

NOTES:

- Gas threadings according UNI ISO 228/1
- Tapered threadings according UNI EN 10226-1-2
- Steel welded components with tig method

| TOLLERANZE GENERALI GENERAL TOLERANCES | SCALA SCALE | | | | | |
|---|----------------|------------|-------------|---------------|----------------|-----------------|
| | fino a 3 | > 3 a 6 | > 6 a 30 | > 30 a 120 | > 120 a 400 | > 400 a 1000 |
| PLASTICA PLASTIC | ±0.15 | ±0.17 | ±0.25 | ±0.4 | ±1 | ±2.5 |
| METALLO METAL | ±0.05 | ±0.05 | ±0.1 | ±0.15 | ±0.2 | ±0.3 |
| METALLO METAL | ±0.1 | ±0.1 | ±0.2 | ±0.3 | ±0.5 | ±0.8 |
| METALLO METAL | X ±0.2 | ±0.3 | ±0.5 | ±0.8 | ±1.2 | ±2 |

MATERIALE / MATERIAL

AISI 304

DISEGN.
DRAW

ZANNI R.

DATA
DATE

21/12/2022

CONTR.
CHECK

DATA
DATE

TRATT. TERMICO E/O SUPERF.
HEAT/SUPERFICIAL TREATMENT

SOSTITUISCE IL/SUBSTITUTES

SOSTITUITO DA/SUBSTITUTED BY

ELETTROLUCIDATURA

Referred to law terms, MONDEO SRL reserves the ownership on this drawing and prohibits to reproduce or communicate it without authorization

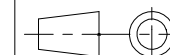
DIMENSIONI IN mm
DIMENSIONS IN mm

CODICE /
CODE

0

DESCRIZIONE / DESCRIPTION

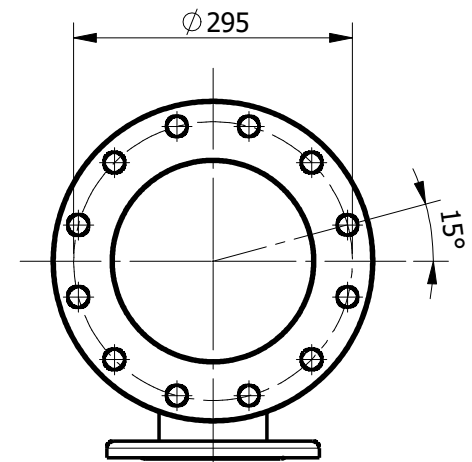
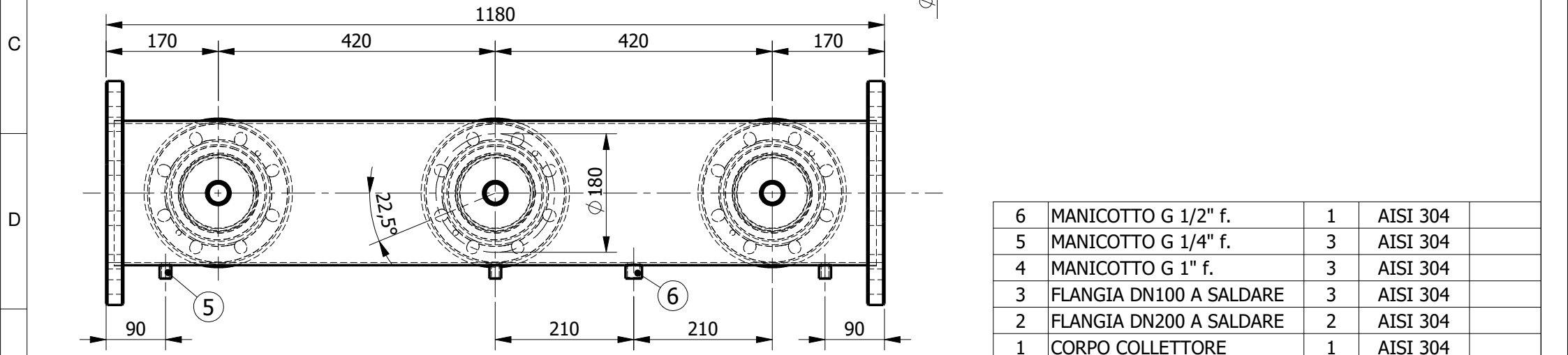
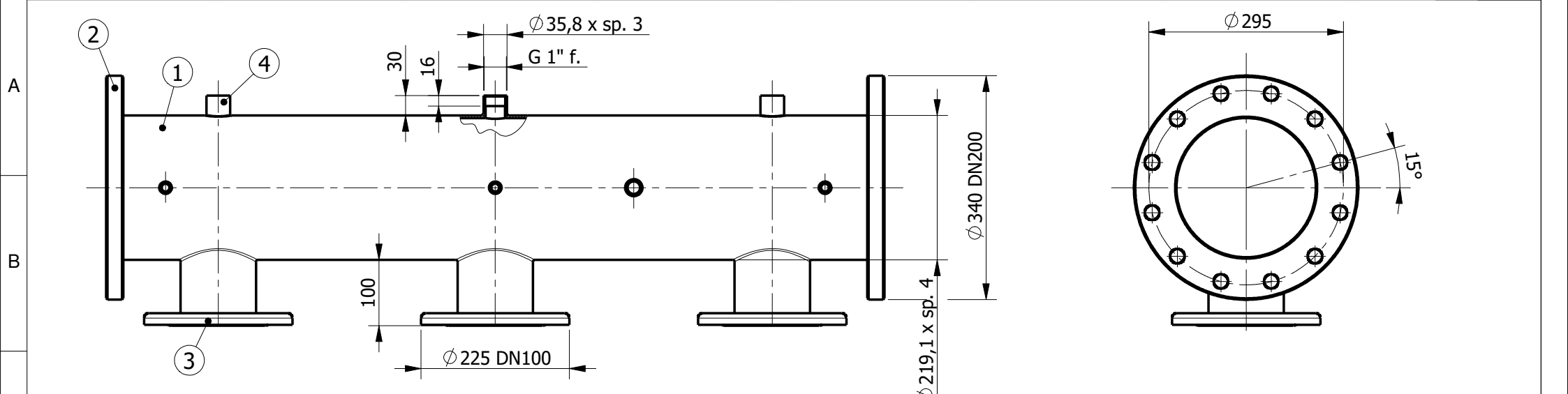
SUCTION MANIFOLD 3P



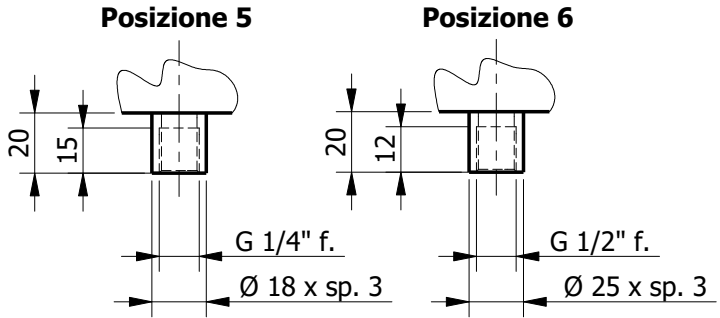
DISEGNO /
DRAWING

06N2224-00





| 6 | MANICOTTO G 1/2" f. | 1 | AISI 304 | |
|------|-------------------------|------|-----------|---------|
| 5 | MANICOTTO G 1/4" f. | 3 | AISI 304 | |
| 4 | MANICOTTO G 1" f. | 3 | AISI 304 | |
| 3 | FLANGIA DN100 A SALDARE | 3 | AISI 304 | |
| 2 | FLANGIA DN200 A SALDARE | 2 | AISI 304 | |
| 1 | CORPO COLLETTORE | 1 | AISI 304 | |
| Pos. | Descrizione | Q.tà | Materiale | N. dis. |



NOTE:
 - Filettature Gas secondo UNI ISO 228/1
 - Filettature coniche secondo UNI EN 10226-1-2
 - Saldature a tig a tenuta stagna

NOTES:
 - Gas threadings according UNI ISO 228/1
 - Tapered threadings according UNI EN 10226-1-2
 - Steel welded components with tig method

| | | | | | | | |
|---|---------------------|----------|---------|----------|------------|-------------|--------------|
| SCALA SCALE | | fino a 3 | > 3 a 6 | > 6 a 30 | > 30 a 120 | > 120 a 400 | > 400 a 1000 |
| TOLLERANZE GENERALI GENERAL TOLERANCES | PLASTICA PLASTIC | ±0.15 | ±0.17 | ±0.25 | ±0.4 | ±1 | ±2.5 |
| | METALLO METAL | ±0.05 | ±0.05 | ±0.1 | ±0.15 | ±0.2 | ±0.3 |
| | METALLO METAL | ±0.1 | ±0.1 | ±0.2 | ±0.3 | ±0.5 | ±0.8 |
| | METALLO METAL | X ±0.2 | ±0.3 | ±0.5 | ±0.8 | ±1.2 | ±2 |

| | | | | |
|---|------------------------------|----------|-----------|------------|
| MATERIALE / MATERIAL | DISEGN. DRAW | ZANNI R. | DATA DATE | 20/12/2022 |
| AISI 304 | CONTR. CHECK | | DATA DATE | |
| TRATT. TERMICO E/O SUPERF. HEAT/SUPERFICIAL TREATMENT | SOSTITUISCE IL/SUBSTITUTES | | | |
| ELETTROLUCIDATURA | SOSTITUITO DA/SUBSTITUTED BY | | | |
| Referred to law terms, MONDEO SRL reserves the ownership on this drawing and prohibits to reproduce or communicate it without authorization | | | | |

MONDEO

DESCRIZIONE / DESCRIPTION

**DELIVERY MANIFOLD
DN 200 3P**

DIMENSIONI IN mm
DIMENSIONS IN mm

CODICE / CODE

0

DISEGNO / DRAWING

06N2223-00