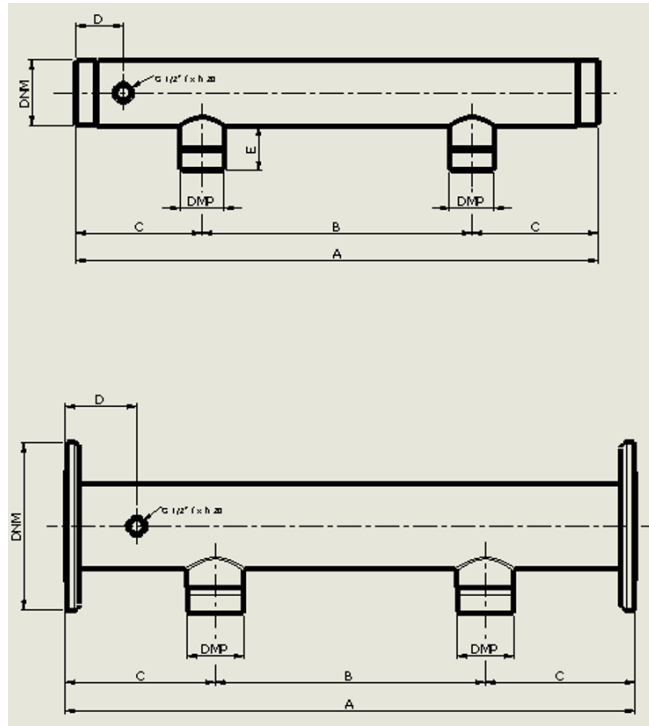
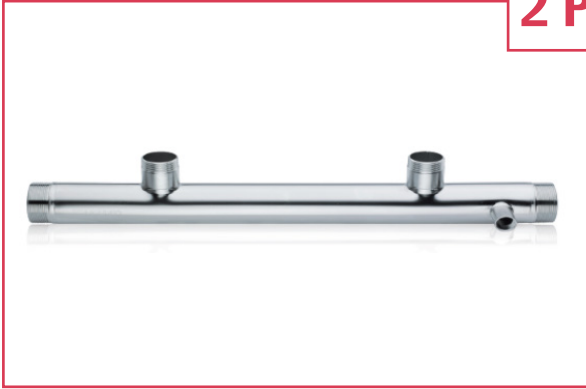


## 2 Pump Suction Manifolds

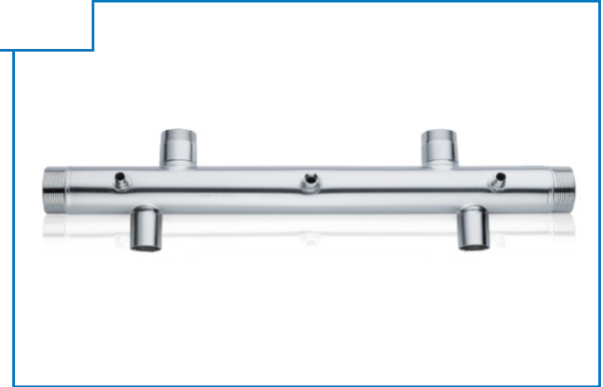
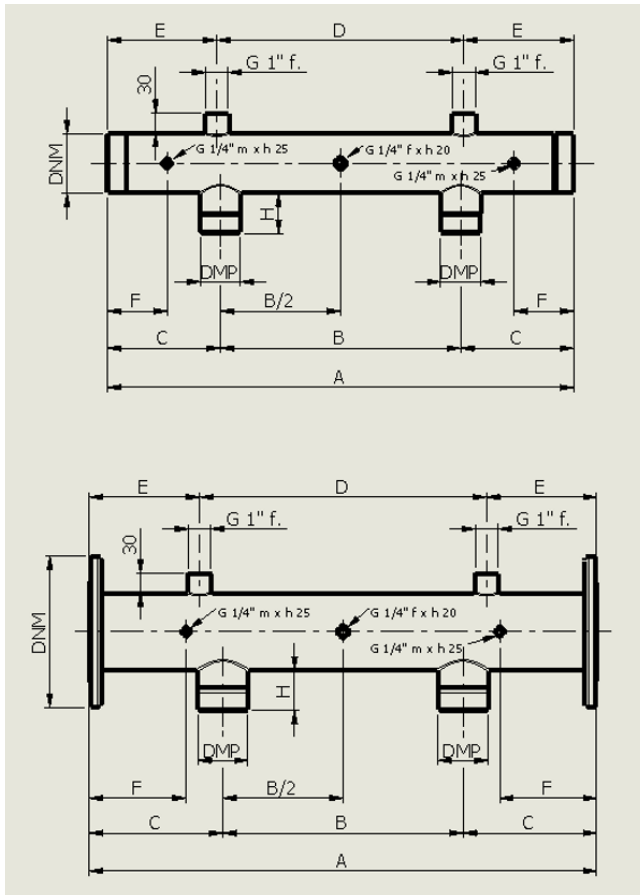


- All threadings are BSPP according UNI-ISO 228/1.
- Pipe weldings should be placed at 90° respect to the outputs of coupling of the pumps.
- All weldings are TIG and seal weld.
- Tubes are AISI 304/316 electrowelded according to UNI EN 10217/7.
- Dimensional pipe tolerances are in accordance to ISO 1127 D3/T3.

Manifold Code	Model	DNM	DMP	Dimensions in mm					Weight Kg	ULT Stock
				A	B	C	D	E		
5M0101-2PS	A 125/100	1"1/4	1"	600	300	150	65	45	1.100	Y
5M0009-2PS	A 150/100	1"1/2	1"	600	300	150	65	45	1.205	Y
5M0103-2PS	A 150/125	1"1/2	1"1/4	600	300	150	65	45	1.300	Y
5M0006A-2PS	A 200/100	2"	1"	600	300	150	65	45	1.441	Y
5M0010-2PS	A 200/125	2"	1"1/4	600	300	150	65	45	1.500	Y
5M0014-2PS	A 200/150	2"	1"1/2	600	300	150	65	45	1.600	Y
5M0011-2PS	A 250/125	2"1/2	1"1/4	600	300	150	65	45	2.295	Y
5M0012-2PS	A 250/150	2"1/2	1"1/2	600	300	150	65	45	2.261	Y
5M0017-2PS	A 300/150	3"	1"1/2	700	360	170	65	45	3.000	Y
5M0016-2PS	A 300/200	3"	2"	600	300	150	65	60	3.094	Y
5M0013-2PS	A 300/200	3"	2"	700	360	170	65	60	3.384	Y
5M0051-2PS	A 400/250	4"	2"1/2	700	450	125	65	60	3.500	N
5M0051B-2PS	A 400/250	4"	2"1/2	700	360	170	65	60	3.500	N
5M0019-2PS*	DN100/250	4"	2"1/2	760	360	200	95	60	6.700	Y
5M0058-2PS	A 400/300	4"	3"	700	360	170	65	60		N

\*Flanged

# 2 Pump Discharge Manifolds

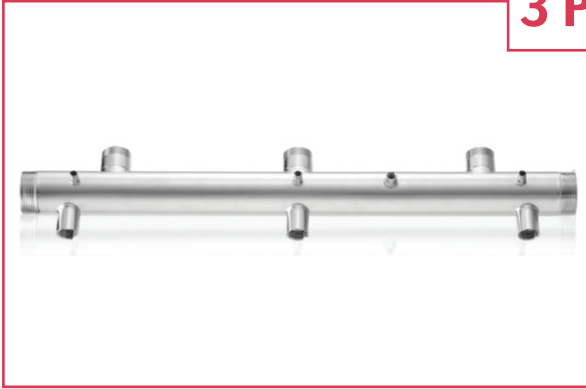


- All threadings are BSPP according UNI-ISO 228/1.
- Pipe weldings should be placed at 90° respect to the outputs of coupling of the pumps.
- All weldings are TIG and seal weld.
- Tubes are AISI 304/316 electrowelded according to UNI EN 10217/7.
- Dimensional pipe tolerances are in accordance to ISO 1127 D3/T3.

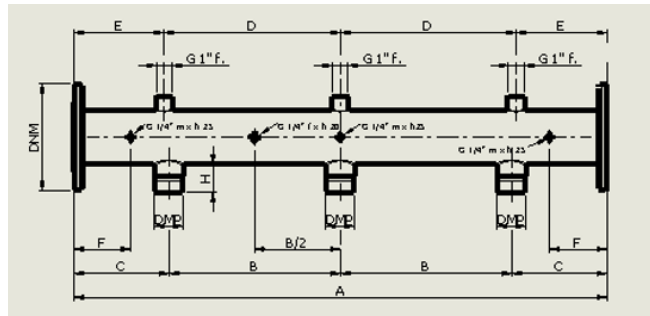
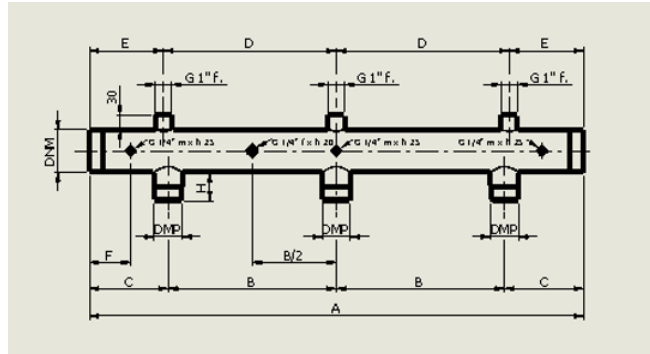
Manifold Code	Model	DNM	DMP	Dimensions in mm							Weight Kg	ULT Stock
				A	B	C	D	E	F	H		
5M0100-2PD	M 125/100	1"1/4	1"	600	300	150	370	115	90	45	1.250	Y
5M0001-2PD	M 150/100	1"1/2	1"	600	300	150	370	115	90	45	1.370	Y
5M0102-2PD	M 150/125	1"1/2	1"1/4	600	300	150	370	115	90	45	1.450	Y
5M0006-2PD	M 200/100	2"	1"	600	300	150	370	115	90	45	1.600	Y
5M0002-2PD	M 200/125	2"	1"1/4	600	300	150	370	115	90	45	1.654	Y
5M0003-2PD	M 200/150	2"	1"1/2	600	300	150	370	115	90	45	1.675	Y
5M0011M-2PD	M 250/125	2"1/2	1"1/4	600	300	150	370	115	90	45	2.440	Y
5M0007-2PD	M 250/150	2"1/2	1"1/2	600	300	150	370	115	90	45	2.447	Y
5M0007B-2PD	M 250/150	2"1/2	1"1/2	700	360	170	370	165	90	45	2.800	N
5M0004-2PD	M 300/150	3"	1"1/2	700	360	170	370	165	90	45	3.200	Y
5M0005-2PD	M 300/200	3"	2"	600	300	150	370	115	90	60	3.400	N
5M0008-2PD	M 300/200	3"	2"	700	360	170	370	165	90	60	3.530	Y
5M0018-2PD*	DN100/250	4"	2 1/2"	760	360	170	430	165	145	60	6.930	Y
5M0057-2PD	M 400/300	4"	3"	700	360	170	370	165	90	60	7.150	N

\*Flanged

# 3 Pump Discharge Manifolds



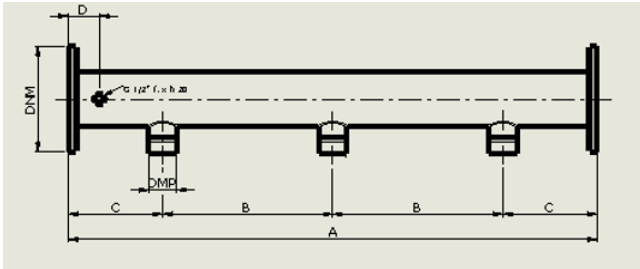
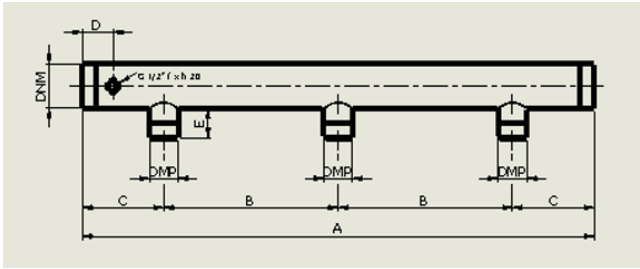
- All threadings are BSPP according UNI-ISO 228/1.
- Pipe weldings should be placed at 90° respect to the outputs of coupling of the pumps.
- All weldings are TIG and seal weld.
- Tubes are AISI 304/316 electrowelded according to UNI EN 10217/7.
- Dimensional pipe tolerances are in accordance to ISO 1127 D3/T3.



Manifold Code	Model	DNM	DMP	Dimensions in mm								Weight Kg	ULT Stock
				A	B	C	D	E	F	H			
5M0001P-3PD	M 150/100	1"1/2	1"	900	300	150	370	80	90	45	1.9000	Y	
5M0006P-3PD	M 200/100	2"	1"	900	300	150	370	80	90	45	2.340	Y	
5M0002P-3PD	M 200/125	2"	1"1/4	900	300	150	370	80	90	45	2.340	Y	
5M0003P-3PD	M 200/150	2"	1"1/2	900	300	150	370	80	90	45	2.450	Y	
5M0011MP-3PD	M 250/125	2"1/2	1"1/4	900	300	150	370	80	90	45	3.620	Y	
5M0007P-3PD	M 250/150	2"1/2	1"1/2	900	300	150	370	80	90	45	3.660	Y	
5M0004P-3PD	M 300/150	3"	1"1/2	900	300	150	370	80	90	45	4.690	Y	
5M0008P-3PD	M 300/200	3"	2"	1060	360	170	370	160	90	60	5.090	Y	
5M0020-3PD*	M 400/200	4"	2"	1120	360	200	370	130	120	60	13.080	Y	
5M0054P-3PD	M 400/250	4"	2"1/2	1060	360	170	370	160	90	60	13.300	N	

\*Flanged

# 3 Pump Suction Manifolds



- All threadings are BSPP according UNI-ISO 228/1.
- Pipe weldings should be placed at 90° respect to the outputs of the pumps.
- All weldings are TIG and seal weld.
- Tubes are AISI 304/316 electrowelded according to UNI EN 10217/7.
- Dimensional pipe tolerances are in accordance to ISO 1127 D3/T3.

Manifold Code	Model	DNM	DMP	Dimensions in mm					Weight Kg	ULT Stock
				A	B	C	D	E		
5M0009P-3PS	A 150/100	1"1/2	1"	900	300	150	65	45	1.800	Y
5M0006AP-3PS	A 200/100	2"	1"	900	300	150	65	45	2.100	Y
5M0010P-3PS	A 200/125	2"	1"1/4	900	300	150	65	45	2.100	Y
5M0014P-3PS	A 200/150	2"	1"1/2	900	300	150	65	45	2.200	Y
5M0011P-3PS	A 250/125	2"1/2	1"1/4	900	300	150	65	45	3.500	Y
5M0012P-3PS	A 250/150	2"1/2	1"1/2	900	300	150	65	45	3.800	Y
5M0017P-3PS	A 300/150	3"	1"1/2	900	300	150	65	45	4.850	Y
5M0013P-3PS	A 300/200	3"	2"	1060	360	170	65	60	4.980	Y
5M0016P-3PS	A 300/200	3"	2"	900	300	150	65	60	4.800	Y
5M0051P-3PS	A 400/250	4"	2"1/2	1060	360	170	65	60	5.000	N
5M0021-3PS*	DN100/200	4"	2"	1120	360	200	95	60	12.770	Y

\*Flanged