

# X-steel ball valves, reduced bore

press fit / press fit, EN (DIN), DN 15-50 (18-54 mm), reduced bore

Body	DN 15-50 Steel, P235GH (1.0345)
Ball	DN 15-50 Stainless steel, X5CrNi18-10 (1.4301)
Ball seal	DN 15-50 PTFE+C
Stem	DN 15-50 Stainless steel, X8CrNiS18-9 (1.4305)
Stem seal	DN 15-50 FPM
Operation	DN 15-50 with composite handle
Press fit connection's O-ring (LBP)	DN 15-50 CIIR

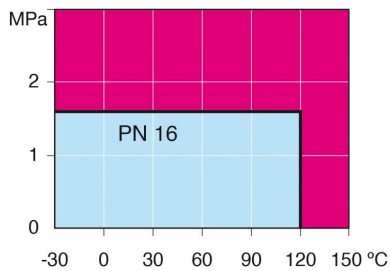


## Operation conditions

-30 ° – +120 °C

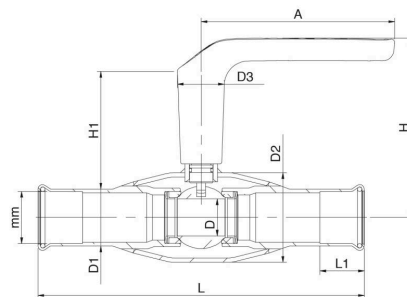
Below 0 °C contact manufacturer

Over +120 °C contact manufacturer



Not for steam

DN 15-50 (18-54 mm)



DN	PN	Product no. Vexve	mm	A	D	D1	D2	D3	H	H1	L	L1	kg
15	16	108015X	18	130	10	21.3	33.7	32.0	108	75	220	25	0.6
20	16	108020X	22	130	15	25.4	42.4	32.0	112	77	220	25	0.8
25	16	108025X	28	130	20	31.4	48.3	32.0	116	78	220	25	1.0
32	16	108032X	35	130	25	38.3	60.3	32.0	121	79	220	30	1.3
40	16	108040X	42	130	32	45.5	70.0	32.0	128	84	220	30	1.5
50	16	108050X	54	130	40	58.0	88.9	32.0	136	84	220	30	2.3