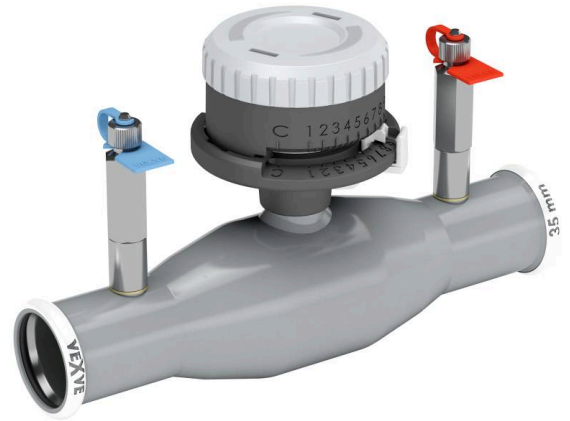


X-balancing valves, stainless steel, reduced bore

press fit / press fit, EN (DIN), DN 15-50 (18-54 mm), reduced bore

Body	DN 15-50 Stainless steel, X2CrNiMo17-12-2 (1.4404)
Ball	DN 15-50 Stainless steel, X2CrNiMo17-12-2 (1.4404), Flowtube Composite
Ball seal	DN 15-50 PTFE+GF
Stem	DN 15-50 Stainless steel, X2CrNiMo17-12-2 (1.4404)
Stem seal	DN 15-50 FPM/NBR
Measuring block	DN 15-50 Self-sealing, stainless steel, X5CrNi18-10 (1.4301)
Operation	DN 15-50 with precision control knob
Press fit connection's O-ring (LBP)	DN 15-50 CIIR

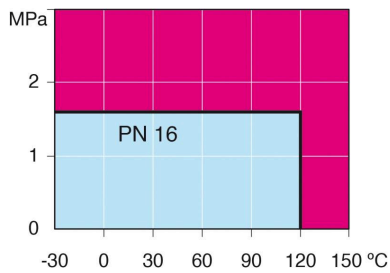


Operation conditions

-30 ° – +120 °C

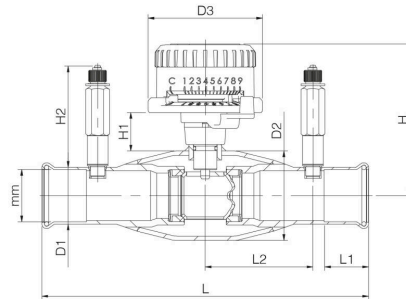
Below 0 °C contact manufacturer

Over +120 °C contact manufacturer



Not for steam

DN 10-50



DN	PN	Product no. Vexve	mm	D1	D2	D3	H	H1	H2	L	L1	L2	kg
15	16	248015X	18	21.3	33.7	77.0	91	28	72	220	25	73	0.9
20	16	248020X	22	25.4	42.4	77.0	95	28	72	220	25	73	1.0
25	16	248025X	28	31.4	28.3	77.0	99	29	72	220	25	73	1.2
32	16	248032X	35	38.3	60.3	77.0	102	26	72	220	30	73	1.5
40	16	248040X	42	45.5	70.0	77.0	110	29	72	220	30	73	1.8
50	16	248050X	54	58.0	88.9	77.0	119	28	72	220	30	73	2.5