

Balancing valves, stainless steel

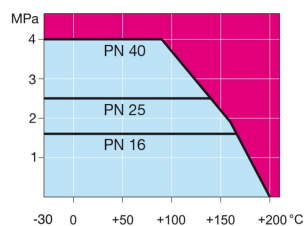
flange/flange, DN 15-250

Body: Stainless steel, X2CrNiMo17-12-2 (1.4404)
 Ball: Stainless steel, X2CrNiMo17-12-2 (1.4404)
 Stem: Stainless steel, X2CrNiMo17-12-2 (1.4404)
 Stem seals: FPM/NBR
 Ball seals: PTFE+GF
 Flanges: EN 1092-1
 Available PN 10, 16, 25, 40
 Operation: DN 15–50 with stainless steel handle
 DN 65–150 with zinc-plated steel handle
 DN 200–250 with manual gear

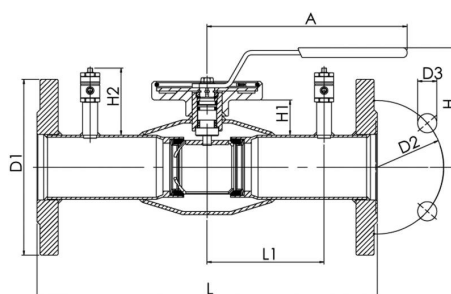


Operating conditions

-30 °C - +200 °C
 Below -10 °C contact manufacturer



Not for steam



Product no. Vexve	DN	PN	A	D1	D2	D3	H	H1	H2	L	L1	Holes	kg
243015	15	40	145	95	65	14	105	21	58	250	65	4	2.1
243020	20	40	145	105	75	14	105	21	58	250	65	4	2.6
243025	25	40	145	115	85	14	113	26	58	240	65	4	3.1
243032	32	40	145	140	100	18	117	25	58	280	80	4	4.7
243040	40	40	188	150	110	18	114	31	58	270	80	4	6
243050	50	40	188	165	125	18	121	31	58	310	100	4	8.1
243065	65	16	280	185	145	18	160	58	82	310	110	8	10.1
243080	80	16	280	200	160	18	173	64	82	310	110	8	12
243100	100	16	280	220	180	18	173	52	82	350	122.5	8	15.9
243125	125	16	400	250	210	18	221	68	82	360	137.5	8	25.6
243150	150	16	600	285	240	22	240	74	82	390	150	8	30
243200	200	16		340	295	22		72	133	425	172.5	12	56.7
243250	250	16		405	355	26		88	133	550	225	12	103.9