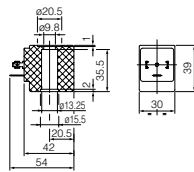


# Coils

BDA Moulding material: PA - Black polyamide - Class F (155°C)  
 BDF Moulding material: PPS - Black polyphenylsulphide - Class H (180°C)  
 BDV Moulding material: PET - Black polyethylene - Class H (180°C)

Winding: in class H

Electrical connections: with connector EN175301-803 paragraph 5.3.1 - protection degree IP65 EN 60529 (DIN 40050)

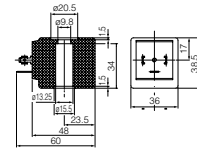


Code	Power	Voltages/ Frequency	ED	Approvals
BDA08012AS	14.5VA	12~50	100%	CE
BDA08012CS	8W	12 DC	100%	CE
BDA08024CS	8W	24 DC	100%	CE
BDA08024DS	14.5VA	24~50/60	100%	CE
BDA08110DS	14.5VA	110~50/60	100%	CE
BDA08223DS	14.5VA	220/230~50/60	100%	CE
BDA08380DS	14.5VA	380~50/60	100%	CE
BDF08012CU	11W	12 DC	100%	CE/UL/CSA
BDV08024CY	11W	24 DC	100%	CE/UL/CSA/VDE
BDV08024DY	17VA	24~50/60	100%	CE/UL/CSA/VDE
BDV08110AY	15VA	110~50/110~60	100%	CE/UL/CSA/VDE
BDV08230AY	16VA	230~50/240~60	100%	CE/UL/CSA/VDE

UDA Moulding material: PA - Black polyamide - Class F (155°C)  
 UDV Moulding material: PET - Black polyethylene - Class H (180°C)

Winding: in class H

Electrical connections: with connector EN175301-803 paragraph 5.3.1 - protection degree IP65 EN 60529 (DIN 40050)

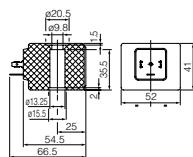


Code	Power	Voltages/ Frequency	ED	Approvals
UDA12024AS	23VA	24~50	100%	CE
UDA12024CS	12W	24 DC	100%	CE
UDA12110DS	23VA	110~50/60	100%	CE
UDA12230AS	23VA	230~50	100%	CE
UDV12112DW	23VA	110/120~50/60	100%	CE/UL/CSA
UDV12230DW	23VA	230~50/60	100%	CE/UL/CSA

GDH Moulding material: EP - Black epoxy resin - Class H (180°C)  
 GDV Moulding material: PET - Black polyethylene - Class H (180°C)

Winding: in class H

Electrical connections: with connector EN175301-803 paragraph 5.3.1 - protection degree IP65 EN 60529 (DIN 40050)



Code	Power	Voltages/ Frequency	ED	Approvals
GDH14024CS	14W	24 DC	100%	CE
GDH14024DS	27VA	24~50/60	100%	CE
GDH14110DS	27VA	110~50/60	100%	CE
GDH14223DS	27VA	220/230~50/60	100%	CE
GDV14024CY	14W	24 DC	100%	CE/UL/CSA/VDE
GDV14024DY	26VA	24~50/6	100%	CE/UL/CSA/VDE
GDV14110AY	23VA	110~50/120~60	100%	CE/UL/CSA/VDE
GDV14230AY	27VA	230~50/240~60	100%	CE/UL/CSA/VDE

Nominal Voltage: DC +10% -5%

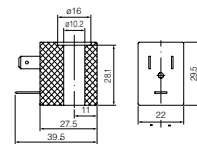
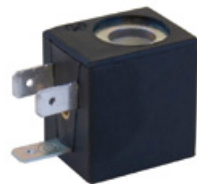
Tolerances: AC +10% -15%

LBA Moulding material: PA - Black polyamide - Class F (155°C)  
 LBF Moulding material: PPS - Black polyphenylsulphide - Class H (180°C)

LBV Moulding material: PET - Black polyethylene - Class H (180°C)

Winding: in class H

Electrical connections: with connector EN175301-803 whellbase 11 - protection degree IP65 EN 60529 (DIN 40050)



Code	Power	Voltages/ Frequency	ED	Approvals
LBA05024AS	10VA	24~50	100%	CE
LBA05024CS	5W	24 DC	100%	CE
LBA05230AS	10VA	230~50	100%	CE
LBF05024BU	10VA	24~60	100%	CE/UL
LBV05024AV	11.5VA	24~50	100%	CE/VDE
LBV05224BW	12.5VA	24~60	100%	CE/UL/CSA
LBV05024CY	7W	24 DC	100%	CE/UL/CSA/VDE
LBV05110AY	10VA	110~50/120~60	100%	CE/UL/CSA/VDE
LBV05110BU	13.5VA	110~60	100%	CE/UL
LBV05220BU	13.5VA	220~60	100%	CE/UL
LBV05230AY	11.5VA	230~50/240~60	100%	CE/UL/CSA/VDE
LBV08024HU	10W	24 DC	100%	CE/UL