

NEW DUAL

COLLETTORI PER GRUPPI DI PRESSURIZZAZIONE

MANIFOLDS FOR WATER BOOSTER UNITS



CARATTERISTICHE TECNICHE

- // **Lavorazione:** deformazione a freddo del tubo
- // **Materiale:** acciaio inox Aisi 304 (Aisi 316 solo su richiesta)
- // **Saldature:** a TIG senza apporto di materiale
- // **Trattamento superficiale:** sgrassaggio, decapaggio ed elettrolucidatura
- // **Connessioni filettate:** gas cilindriche secondo UNI ISO 228/1
- // **Pressione nominale di esercizio:** 16 bar

TECHNICAL FEATURES:

- // **Manufacturing process:** pipes cold buckling
- // **Material:** stainless steel Aisi 304 (Aisi 316 only on request)
- // **Welded joints:** made with TIG method without any additional material
- // **Surface treatment:** degreasing, pickling and electropolishing.
- // **Threaded ends:** UNI ISO 228/1 gas cylindrical
- // **Nominal working pressure:** 16 bar

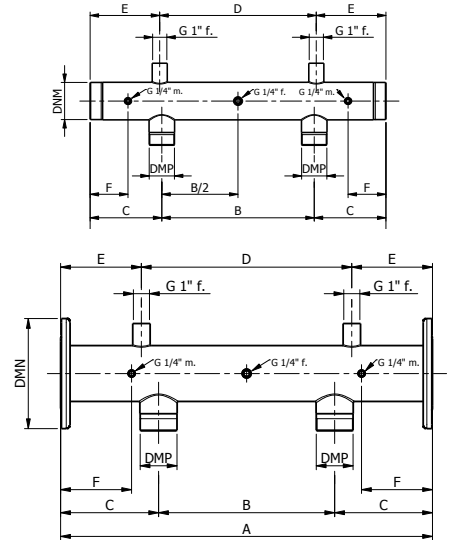


VERSIONE 2 POMPE - TIPO M: COLLETTORI DI MANDATA//
2 PUMPS MODEL - M TYPE: DELIVERY MANIFOLDS



DIMENSIONI E PESI//DIMENSIONS AND WEIGHTS

DNM	DMP	Modello Models	Dimensioni in mm//Dimensions in mm						Peso in kg Weight in kg	Codice articolo Code
			A	B	C	D	E	F		
1"1/2 M	1" M	M 150/100	600	300	150	370	115	90	1,370	5M0001
2" M	1" M	M 200/100	600	300	150	370	115	90	1,600	5M0006
2" M	1"1/4 M	M 200/125	600	300	150	370	115	90	1,654	5M0002
2" M	1"1/2 M	M 200/150	600	300	150	370	115	90	1,675	5M0003
2"1/2 M	1"1/2 M	M 250/150	600	300	150	370	115	90	2,447	5M0007
3" M	1"1/2 M	M 300/150	700	360	170	430	135	115	3,200	5M0004
3" M	2" M	M 300/200	600	300	150	370	115	90	3,400	5M0005
3" M	2" M	M 300/200	700	360	170	370	165	90	3,530	5M0008
DN100 *	2"1/2 M	M 400/250	760	360	170	430	165	145	6,930	5M0018

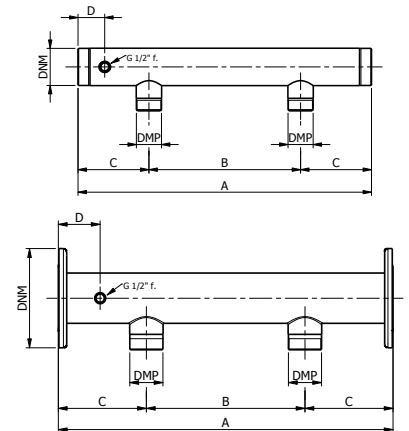


VERSIONE 2 POMPE - TIPO A: COLLETTORI DI ASPIRAZIONE//
2 PUMPS MODEL - A TYPE: SUCTION MANIFOLDS



DIMENSIONI E PESI//DIMENSIONS AND WEIGHTS

DNM	DMP	Modello Models	Dimensioni in mm Dimensions in mm				Peso in kg Weight in kg	Codice articolo Code
			A	B	C	D		
1"1/2 M	1" M	A 150/100	600	300	150	65	1,205	5M0009
2" M	1" M	A 200/100	600	300	150	65	1,441	5M0006A
2" M	1"1/4 M	A 200/125	600	300	150	65	1,500	5M0010
2" M	1"1/2 M	A 200/150	600	300	150	65	1,600	5M0014
2"1/2 M	1"1/4 M	A 250/125	600	300	150	65	2,295	5M0011
2"1/2 M	1"1/2 M	A 250/150	600	300	150	65	2,261	5M0012
3" M	2" M	A 300/200	600	300	150	65	3,094	5M0016
3" M	2" M	A 300/200	700	360	170	65	3,384	5M0013
DN100 *	2"1/2M	A 400/250	760	360	200	95	6,700	5M0019



* Flange Stampate PN16 / PN16 Flanges from pressed stainless steel

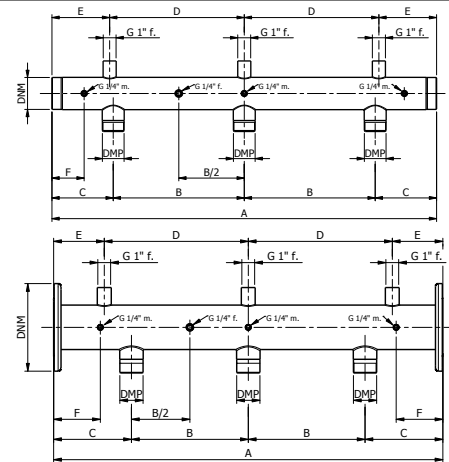
Per Versioni Personalizzate, Contattare Il Nostro Ufficio Commerciale
For Personalized Models, Contact Our Sales Dept.

VERSIONE 3 POMPE - TIPO M: COLLETTORI DI MANDATA//
3 PUMPS MODEL - M TYPE: DELIVERY MANIFOLDS

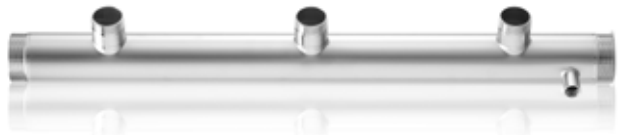


DIMENSIONI E PESI//DIMENSIONS AND WEIGHTS

DNM	DMP	Modello Models	Dimensioni in mm // Dimensions in mm						Peso in kg Weight in kg	Codice articolo Code
			A	B	C	D	E	F		
2" M	1" M	M 200/100	900	300	150	370	80	90	2,34	5M0006P
2" M	1"1/4 M	M 200/125	900	300	150	370	80	90	2,34	5M0002P
2"1/2 M	1"1/4 M	M 250/125	900	300	150	370	80	90	3,62	5M0011MP
2"1/2 M	1"1/2 M	M 250/150	900	300	150	370	80	90	3,66	5M0007P
3" M	1"1/2 M	M 300/150	900	300	150	370	80	90	4,69	5M0004P
3" M	2" M	M 300/200	1060	360	170	370	160	90	5,09	5M0008P
DN100 *	2" M	M 400/200	1120	360	200	370	130	120	13,08	5M0020

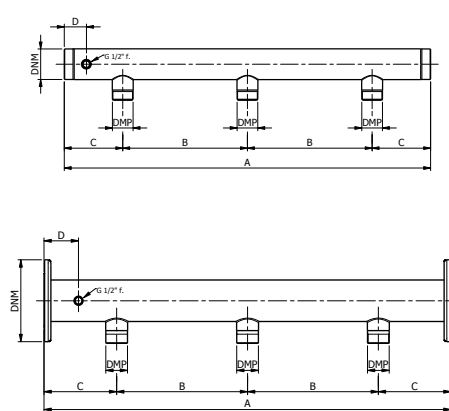


VERSIONE 3 POMPE - TIPO A: COLLETTORI DI ASPIRAZIONE//
3 PUMPS MODEL - A TYPE: SUCTION MANIFOLDS



DIMENSIONI E PESI//DIMENSIONS AND WEIGHTS

DNM	DMP	Modello Models	Dimensioni in mm Dimensions in mm				Peso in kg Weight in kg	Codice articolo Code
			A	B	C	D		
2" M	1" M	A 200/100	900	300	150	65	2,10	5M0006AP
2" M	1"1/4 M	A 200/125	900	300	150	65	2,10	5M0010P
2" 1/2 M	1"1/4 M	A 250/125	900	300	150	65	3,50	5M0011P
2" 1/2 M	1"1/2 M	A 250/150	900	300	150	65	3,80	5M0012P
3" M	2" M	A 300/200	900	300	150	65	4,80	5M0016P
3" M	1"1/2 M	A 300/150	1060	360	170	65	4,85	5M0017P
3" M	2" M	A 300/200	1060	360	170	65	4,98	5M0013P
DN100 *	2" M	A 400/200	1120	360	200	95	12,77	5M0021



* Flange Stampate PN16 / PN16 Flanges from pressed stainless steel

Per Versioni Personalizzate, Contattare Il Nostro Ufficio Commerciale
For Personalized Models, Contact Our Sales Dept.

COLLETTORI SPECIALI // SPECIAL MANIFOLDS

CARATTERISTICHE TECNICHE:

- // **Lavorazione:** deformazione a freddo del tubo
- // **Materiale:**
acciaio inox Aisi 304 (Aisi 316 solo su richiesta)
- // **Saldature:** a TIG senza apporto di materiale
- // **Trattamento superficiale:**
sgrassaggio, decappaggio ed elettrolucidatura
- // **Modelli filettati (da 1" 1/2 a 4"):**
filettature gas UNI ISO 228/1 o UNI EN 10226-1
- // **Modelli flangiati (da 1" 1/2 a 10"):**
flange con foratura UNI EN 1092-1
- // **Pressione nominale di esercizio:**
vedere tabella sottostante
- // **Lunghezza massima realizzabile:** 2000 mm

TECHNICAL FEATURES:

- // **Manufacturing process:** pipes cold buckling
- // **Material:**
stainless steel Aisi 304 (Aisi 316 only on request)
- // **Welded joints:** made with TIG method without any additional material
- // **Surface treatment:**
degreasing, pickling and electropolishing.
- // **Threaded models (from 1" 1/2 to 4"):**
threads UNI ISO 228/1 or UNI EN 10226-1
- // **Flanged models (from 1" 1/2 to 10"):**
flanges with holes according to UNI EN 1092-1
- // **Nominal working pressure:** see the table below
- // **Maximum length:** 2000 mm



DIMENSIONI E PESI // DIMENSIONS AND WEIGHTS

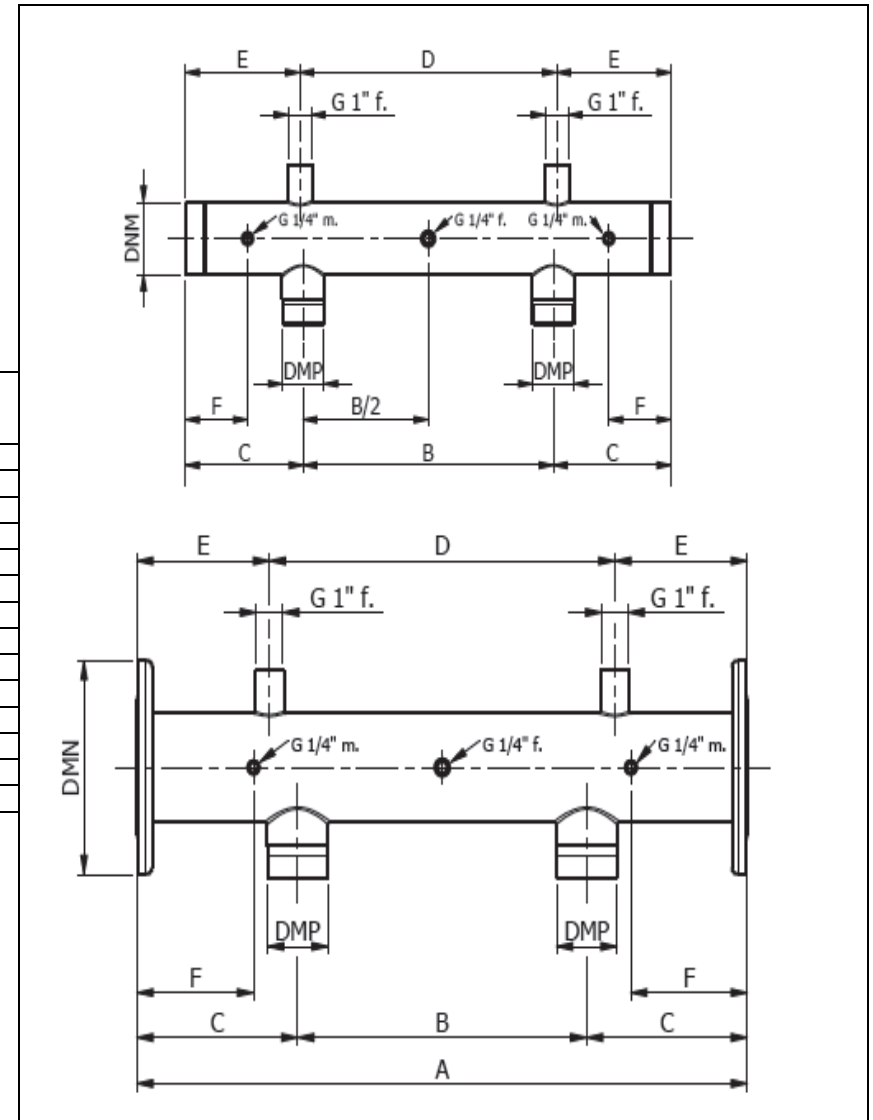
Tubo principale // Main pipe		Diametro tubo mm Main Pipe Diameter mm	Spessore mm Thickness mm	Pressione nominale in bar Nominal pressure in bar	Lunghezza massima in mm Maximum length in mm
Misura // Size	DN				
1" 1/2	40	48,3	1,5	25	2000
2"	50	60,3	1,5	25	2000
2" 1/2	65	76,1	2	25	2000
3"	80	88,9	2	25	2000
4"	100	114,3	3	16	2000
5"	125	139,7	3	16	2000
6"	150	168,3	3	12	2000
8"	200	219,1	4	10	2000
10"	250	273	4	10	2000

2 PUMP DISCHARGE MANIFOLDS

- NOTES:- All threadings are BSPP according UNI-ISO 228/1
 -The weldings of the pipe should be placed at 90 ° respect the outputs of coupling of the pumps
 -All the weldings are TIG and seal weld
 -Tubes are AISI 304/316 electrowelded according UNI EN 10217/7
 -Dimensional pipe tolerances are ISO 1127 D3/T3



Manifold Code (The * Flanged)	MODEL	DNM	DMP	Dimensions in mm						Weight (KG)	ULT Stock
				A	B	C	D	E	F		
5M0100-2PD	M 125/100	1"1/4	1"	600	300	150	370	115	90	1.250	Y
5M0001-2PD	M 150/100	1"1/2	1"	600	300	150	370	115	90	1.370	Y
5M0102-2PD	M 150/125	1"1/2	1"1/4	600	300	150	370	115	90	1.450	Y
5M0006-2PD	M 200/100	2"	1"	600	300	150	370	115	90	1.600	Y
5M0002-2PD	M 200/125	2"	1"1/4	600	300	150	370	115	90	1.654	Y
5M0003-2PD	M 200/150	2"	1"1/2	600	300	150	370	115	90	1.675	Y
5M0011M-2PD	M 250/125	2"1/2	1"1/4	600	300	150	370	115	90	2.440	Y
5M0007-2PD	M 250/150	2"1/2	1"1/2	600	300	150	370	115	90	2.447	Y
5M0007B-2PD	M 250/150	2"1/2	1"1/2	700	360	170	370	115	90	2.800	N
5M0004-2PD	M 300/150	3"	1"1/2	700	360	170	370	135	115	3.200	Y
5M0005-2PD	M 300/200	3"	2"	600	360	150	370	115	90	3.400	N
5M0008-2PD	M 300/200	3"	2"	700	360	170	370	165	90	3.530	Y
5M0018-2PD*	M 400/250	4"	2 1/2"	760	360	170	370	165	90	6.930	Y
5M0057-2PD	M 400/300	4"	3"	700	360	170	370	165	90	7.150	N



Exclusive U.K Distributor For

VEXVE



MONDEO



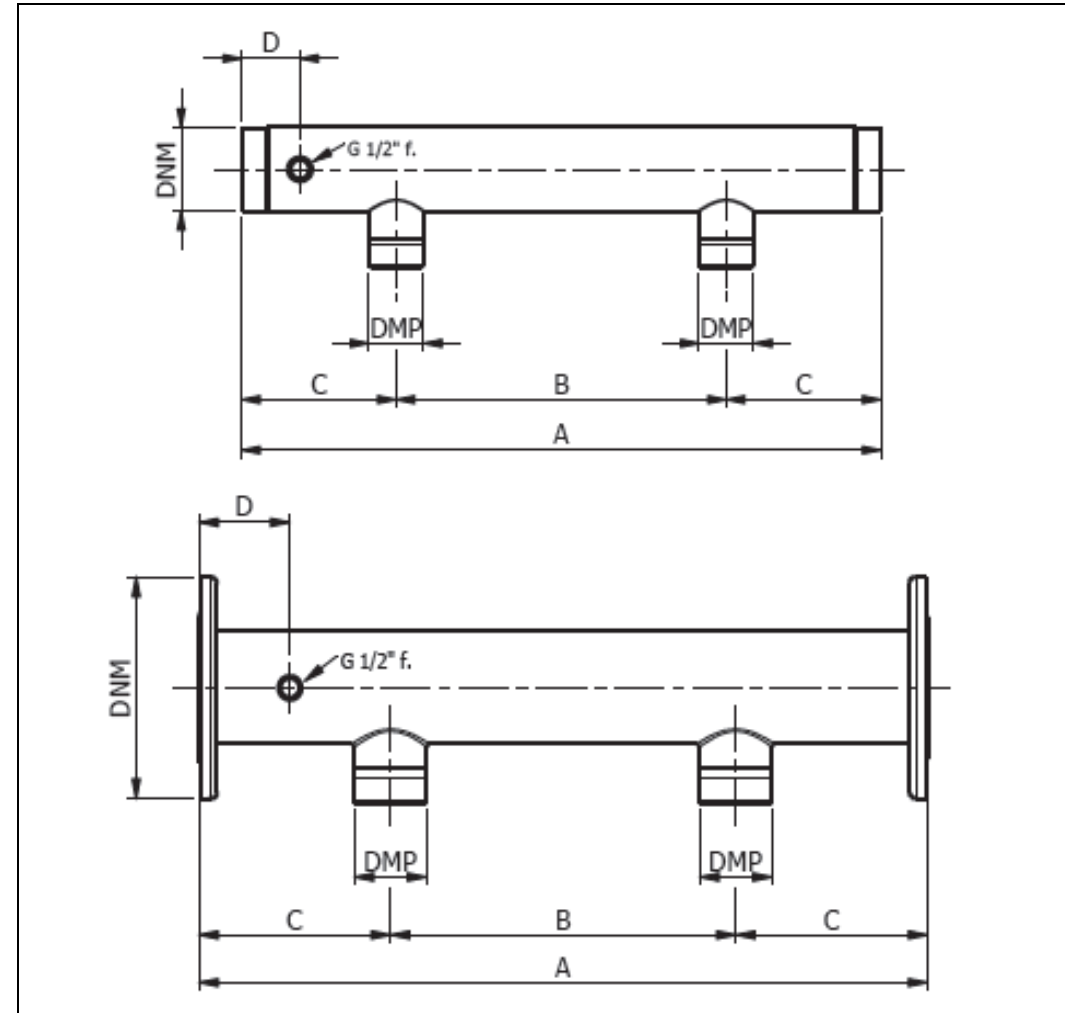
For more information on these products contact us on: sales@ultravalve.co.uk or call 01384 411888

2 PUMP SUCTION MANIFOLDS

- NOTES:- All threadings are BSPP according UNI-ISO 228/1
 -The weldings of the pipe should be placed at 90 ° respect the outputs of coupling of the pumps
 -All the weldings are TIG and seal weld
 -Tubes are AISI 304/316 electrowelded according UNI EN 10217/7
 -Dimensional pipe tolerances are ISO 1127 D3/T3



Manifold Code (The * Flanged)	MODEL	DNM	DMP	Dimensions in mm				Weight (KG)	ULT Stock
				A	B	C	D		
5M0101-2PS	A 125/100	1"1/4	1"	600	300	150	65	1.100	Y
5M0009-2PS	A 150/100	1"1/2	1"	600	300	150	65	1.205	Y
5M0103-2PS	A 150/125	1"1/2	1"1/4	600	300	150	65	1.300	Y
5M0006A-2PS	A 200/100	2"	1"	600	300	150	65	1.441	Y
5M0010-2PS	A 200/125	2"	1"1/4	600	300	150	65	1.500	Y
5M0014-2PS	A 200/150	2"	1"1/2	600	300	150	65	1.600	Y
5M0011-2PS	A 250/125	2"1/2	1"1/4	600	300	150	65	2.295	Y
5M0012-2PS	A 250/150	2"1/2	1"1/2	600	300	150	65	2.261	Y
5M0017-2PS	A 300/150	3"	1"1/2	700	360	170	65	3.000	Y
5M0016-2PS	A 300/200	3"	2"	600	300	150	65	3.094	Y
5M0013-2PS	A 300/200	3"	2"	700	360	170	65	3.384	Y
5M0051-2PS	A 300/250	3"	2"1/2	700	450	170	65	3.500	N
5M0051B-2PS	A 300/250	3"	2"1/2	700	360	170	65	3.500	N
5M0019-2PS*	A 400/250	4"	2"1/2	760	360	200	95	6.700	Y
5M0058-2PS	A 400/300	4"	3"	700	360	170	95		N



Exclusive U.K Distributor For

VEXVE



MONDEO



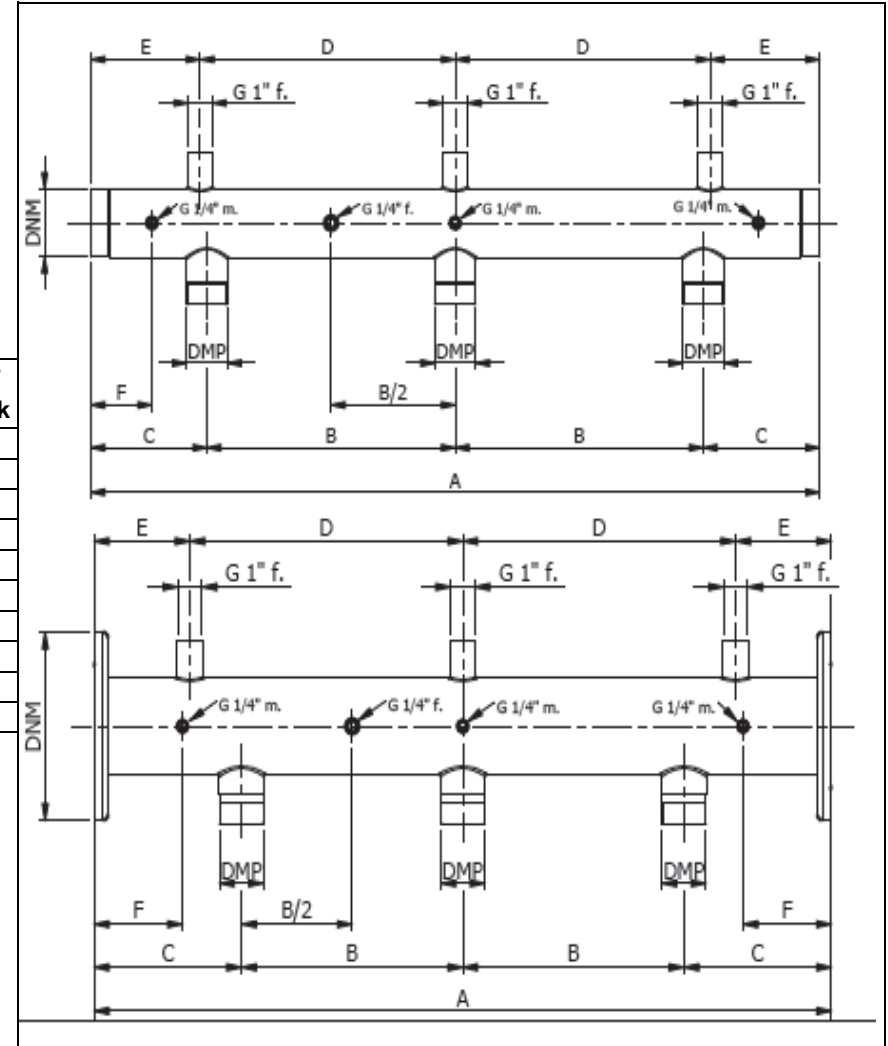
For more information on these products contact us on: sales@ultravive.co.uk or call 01384 411888

3 PUMP DISCHARGE MANIFOLDS

- NOTES:- All threadings are BSPP according UNI-ISO 228/1
 -The weldings of the pipe should be placed at 90 ° respect the outputs of coupling of the pumps
 -All the weldings are TIG and seal weld
 -Tubes are AISI 304/316 electrowelded according UNI EN 10217/7
 -Dimensional pipe tolerances are ISO 1127 D3/T3



Manifold Code (The * Flanged)	MODEL	DNM	DMP	Dimensions in mm						Weight (KG)	ULT Stock
				A	B	C	D	E	F		
5M0001P-3PD	M 150/100	1"1/2	1"	900	300	150	370	80	90	1.9000	Y
5M0006P-3PD	M 200/100	2"	1"	900	300	150	370	80	90	2.340	Y
5M0002P-3PD	M 200/125	2"	1"1/4	900	300	150	370	80	90	2.340	Y
5M0003P-3PD	M 200/150	2"	1"1/2	900	300	150	370	80	90	2.450	Y
5M0011MP-3PD	M 250/125	2"1/2	1"1/4	900	300	150	370	80	90	3.620	Y
5M0007P-3PD	M 250/150	2"1/2	1"1/2	900	300	150	370	80	90	3.660	Y
5M0004P-3PD	M 300/150	3"	1"1/2	900	300	150	370	80	90	4.690	Y
5M0008P-3PD	M 300/200	3"	2"	1060	360	170	370	160	90	5.090	Y
5M0020-3PD*	M 400/200	4"	2"	1120	360	200	370	130	120	13.080	Y
5M0054P-3PD	M 400/300	4"	3"	1060	360	170	370	160	90	13.300	N



Exclusive U.K Distributor For

VEXVE



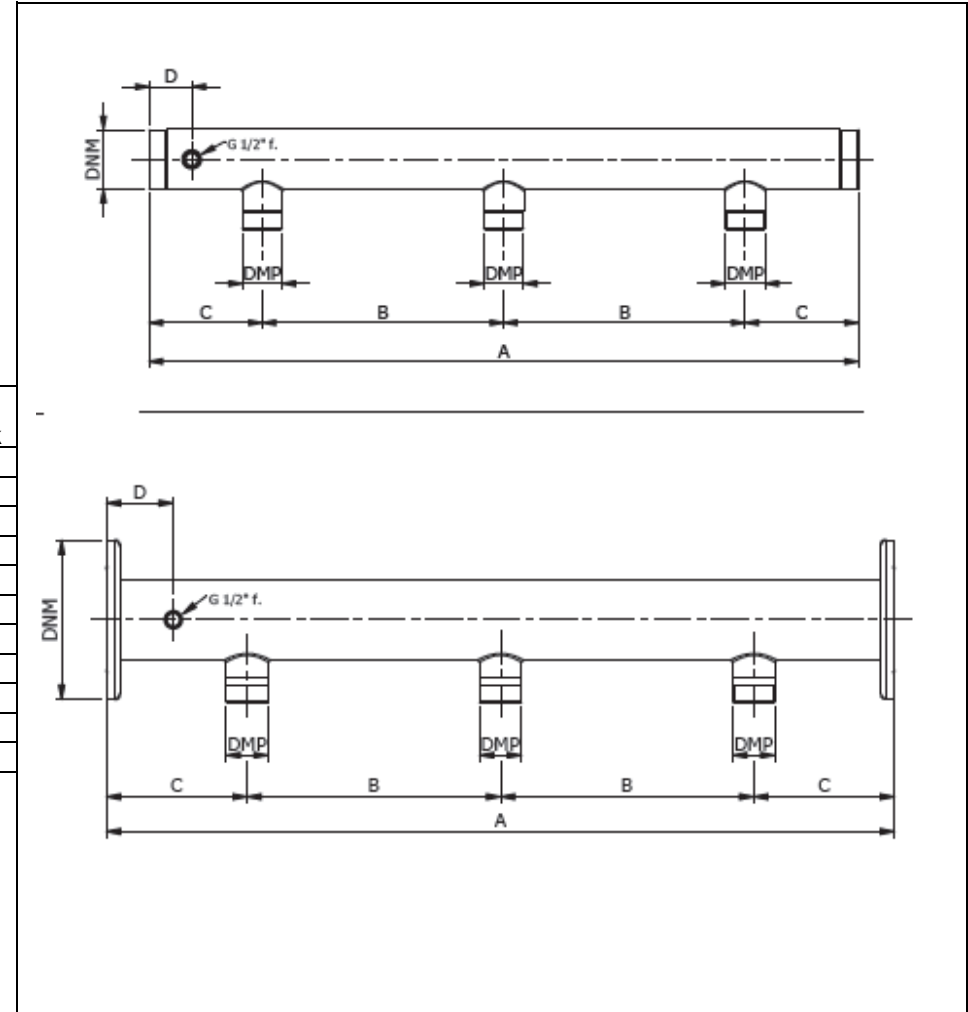
MONDEO



For more information on these products contact us on: sales@ultralve.co.uk or call 01384 411888

3 PUMP SUCTION MANIFOLDS

- NOTES:- All threadings are BSPP according UNI-ISO 228/1
 -The weldings of the pipe should be placed at 90 ° respect the outputs of coupling of the pumps
 -All the weldings are TIG and seal weld
 -Tubes are AISI 304/316 electrowelded according UNI EN 10217/7
 -Dimensional pipe tolerances are ISO 1127 D3/T3



Manifold Code (The * Flanged)	MODEL	DNM	DMP	Dimensions in mm				Weight (KG)	ULT Stock
				A	B	C	D		
5M0009P-3PS	A 150/100	1"1/2	1"	900	300	150	65	1.800	Y
5M0006AP-3PS	A 200/100	2"	1"	900	300	150	65	2.100	Y
5M0010P-3PS	A 200/125	2"	1"1/4	900	300	150	65	2.100	Y
5M0014P-3PS	A 200/150	2"	1"1/2	900	300	150	65	2.200	Y
5M0011P-3PS	A 250/125	2"1/2	1"1/4	900	300	150	65	3.500	Y
5M0012P-3PS	A 250/150	2"1/2	1"1/2	900	300	150	65	3.800	Y
5M0017P-3PS	A 300/150	3"	1"1/2	900	300	150	65	4.850	Y
5M0013P-3PS	A 300/200	3"	2"	1060	360	170	65	4.980	Y
5M0016P-3PS	A 300/200	3"	2"	900	300	150	65	4.800	Y
5M0051P-3PS	A 300/250	3"	2"1/2	1060	360	170	65	5.000	N
5M0021-3PS*	A 400/200	4"	2"	1120	360	200	95	12.770	Y



Exclusive U.K Distributor For

VEXVE



MONDEO



For more information on these products contact us on: sales@ultravalue.co.uk or call 01384 411888