

Steel ball valves, full bore

welding/welding, EN (DIN), DN 15-500

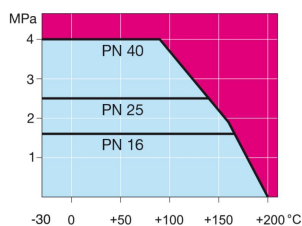
Body:	DN 15-400 Steel, P235GH (1.0345) DN 500-800 Steel, P355 NL1 (1.0566)/ GP240GH (1.0619)
Ball:	DN 15-500 Stainless steel, X5CrNi18-10 (1.4301) DN 600-800 Steel + stainless plating, ASTM A350 LF2+Ni
Stem:	Stainless steel, X8CrNiS18-9 (1.4305)
Stem seals:	FPM
Ball seals:	PTFE+C
Operation:	With zinc-plated steel handle DN 250 and larger without handle We recommend manual gear operation for sizes DN 200 and larger



Operating conditions

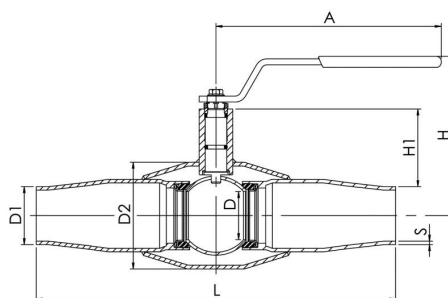
-30°C - +200°C

Below 0 °C contact manufacturer

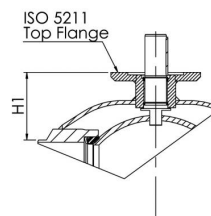


Not for steam

DN 15 - 125



DN 150 - 500



Product no. Vexve	DN	PN	A	D	D1	D2	H	H1	L	S	kg
150015	15	40	145	15	21.3	42.4	103	23	230	2.1	0.8
150020	20	40	145	20	26.9	48.3	118	37	230	2.3	1.5
150025	25	40	145	25	33.7	60.3	121	37	260	2.6	2.2
150032	32	40	188	32	42.4	70	121	46	260	2.6	2.5
150040	40	40	188	40	48.3	88.9	127	49	300	2.9	4
150050	50	25	278	50	60.3	101.6	158	70	300	2.9	4.5
150065	65	25	278	65	76.1	121	171	74	300	3.2	6.7
150080	80	25	279	80	88.9	146	218	114	325	3.6	10.5
150100	100	25	400	100	114.3	177.8	253	113	325	3.6	15.5
150125	125	25	600	125	139.7	219.1	272	121	360	3.6	25
150150	150	25	870	150	168.3	273	281	117	400	4.5	51
150200	200	25	1200	200	219.1	355.6	343	135	530	5	95
150250	250	25		250	273	457		158	550	5	126
150300	300	25		290	323.9	508		206	686	5.6	177
150350	350	25		340	355.6	610		267	762	6.3	258
150400	400	25		390	406	660		309	1100	7.1	519
150500	500	25		489	508	813		325	970	7.1	920

Steel ball valves, full bore

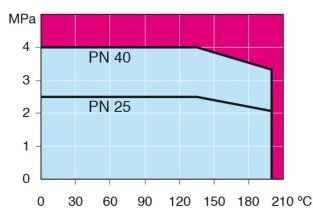
welding/welding, EN (DIN), DN 600-800

Body:	DN 15–400 Steel, P235GH (1.0345) DN 500–800 Steel, P355 NL1 (1.0566)/ GP240GH (1.0619)
Ball:	DN 15–500 Stainless steel, X5CrNi18-10 (1.4301) DN 600–800 Steel + stainless plating, ASTM A350 LF2+Ni
Stem:	Stainless steel, X8CrNiS18-9 (1.4305)
Stem seals:	FPM
Ball seals:	PTFE+C
Equipment:	lifting lugs, drain valve, mounting stand
Operation:	Valves are available with manual gear or with an electric or hydraulic actuator: www.vexve.com/en/actuators



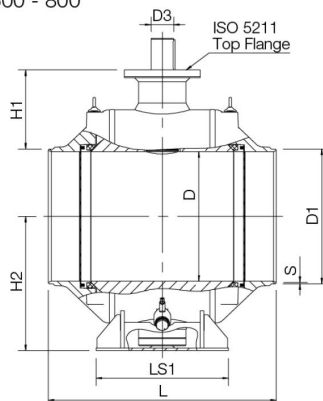
Operating conditions

-30°C - +200°C
Below 0 °C contact manufacturer

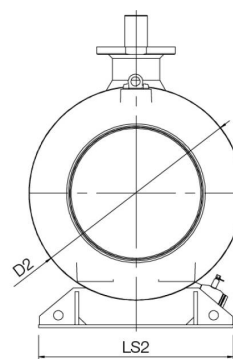


Not for steam

DN 600 - 800



DN 600 - 800



Product no. Vexve	DN	PN	D	D1	D2	D3	H1	H2	L	LS1	LS2	S	ISO 5211	kg
150600	600	40	589	610	965	100	388	616	1065	560	965	7.1	F35	2325
150700	700	40	684	712	1125	120	417	709	1205	694	1028	8	F35	3450
150800	800	40	779	813.6	1290	140	448	799	1330	680	1290	8.8	F40	5160

Available also PN 40

Steel ball valves, full bore

flange/flange, DN 15-500

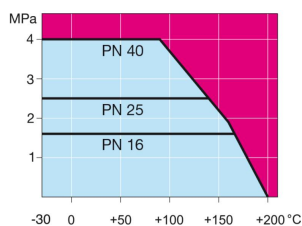
Body:	DN 15-400 Steel, P235GH (1.0345) DN 500-800 Steel, P355 NL1 (1.0566)/ GP240GH (1.0619)
Ball:	DN 15-500 Stainless steel, X5CrNi18-10 (1.4301) DN 600-800 Steel + stainless plating, ASTM A350 LF2+Ni
Stem:	Stainless steel, X8CrNiS18-9 (1.4305)
Stem seals:	FPM
Ball seals:	PTFE+C
Flanges:	EN 1092-1 Available PN 10, 16, 25, 40
Operation:	With zinc-plated steel handle DN 250 and larger without handle We recommend manual gear operation for sizes DN 200 and larger



Operating conditions

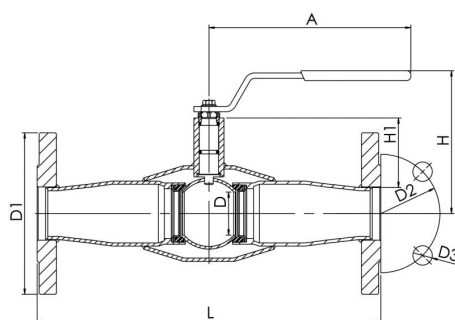
-30°C - +200°C

Below 0 °C contact manufacturer

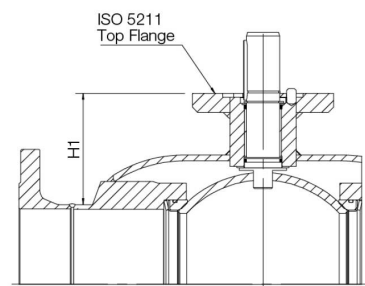


Not for steam

DN 15 - 125



DN 150 - 500



Product no. Vexve	DN	PN	A	D	D1	D2	D3	H	H1	L	Holes	kg
153015	15	40	147	15	95	65	14	103	26	245	4	1.3
153020	20	40	145	20	105	75	14	117	37	245	4	3
153025	25	40	145	25	115	85	14	121	37	275	4	3.5
153032	32	40	188	32	140	100	18	121	46	275	4	5.5
153040	40	40	188	40	150	110	18	127	49	320	4	7.5
153050	50	25	278	50	165	125	18	158	70	320	4	9.5
153065	65	16	278	65	185	145	18	171	74	325	8	13.5
153080	80	16	279	80	200	160	18	218	114	350	8	19
153100	100	16	400	100	220	180	18	253	113	350	8	24
153125	125	16	600	125	250	210	18	272	121	375	8	34
153150	150	16	870	150	285	240	22	281	117	515	8	65
153200	200	16	1200	200	340	295	22	343	135	560	12	120
153250	250	16		250	405	355	26		158	595	12	160
153300	300	16		290	460	410	26		206	716	12	220
153350	350	16		340	520	470	26		267	802	16	350
153400	400	16		390	580	525	30		306	1140	16	610
153500	500	16		489	715	650	33		308	1016	20	1100

Steel ball valves, full bore

flange/flange, DN 600-800

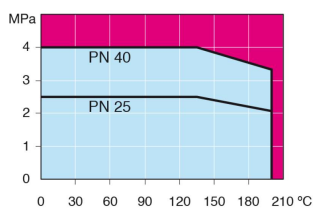
Body:	DN 15-400 Steel, P235GH (1.0345) DN 500-800 Steel, P355 NL1 (1.0566)/ GP240GH (1.0619)
Ball:	DN 15-500 Stainless steel, X5CrNi18-10 (1.4301) DN 600-800 Steel + stainless plating, ASTM A350 LF2+Ni
Stem:	Stainless steel, X8CrNiS18-9 (1.4305)
Stem seals:	FPM
Ball seals:	PTFE+C
Flanges:	EN 1092-1 Available PN 10, 16, 25, 40
Equipment:	lifting lugs, drain valve, mounting stand
Operation:	Valves are available with manual gear or with an electric or hydraulic actuator: www.vexve.com/en/actuators



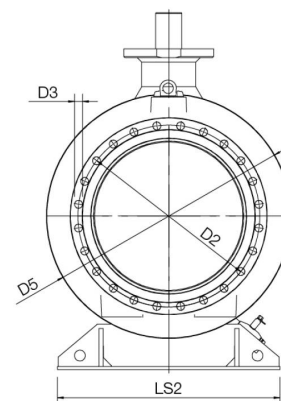
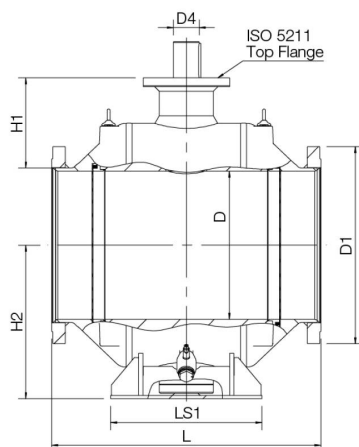
Operating conditions

-30°C - +200°C

Below 0 °C contact manufacturer



Not for steam



Product no. Vexve	DN	PN	D	D1	D2	D3	D4	D5	H1	H2	L	LS1	LS2	Holes	ISO 5211	kg
153600	600	16	589	840	770	36	100	965	371	616	1130	560	965	20	F35	2520
153700	700	16	684	910	840	36	120	1125	416	709	1245	700	1028	24	F35	3660
153800	800	16	779	1025	950	39	140	1290	421	799	1385	680	1290	24	F40	5400