

Balancing valves, stainless steel

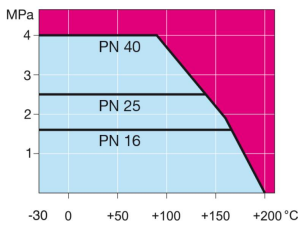
welding/welding, EN (DIN), DN 15-250

Body: Stainless steel, X2CrNiMo17-12-2 (1.4404)
 Ball: Stainless steel, X2CrNiMo17-12-2 (1.4404)
 Stem: Stainless steel, X2CrNiMo17-12-2 (1.4404)
 Stem seals: FPM/NBR
 Ball seals: PTFE+GF
 Operation: DN 15–50 with stainless steel handle
 DN 65–150 with zinc-plated steel handle
 DN 200–250 with manual gear

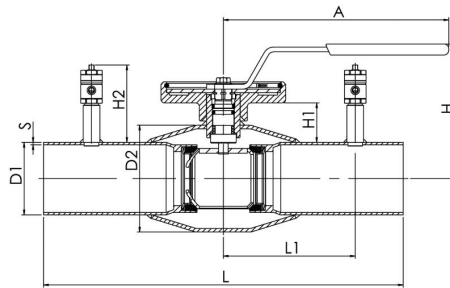


Operating conditions

-30 °C - +200 °C
 Below -10 °C contact manufacturer



Not for steam



Product no. Vexve	DN	PN	A	D1	D2	H	H1	H2	L	L1	S	kg
240015	15	40	145	21.3	42.4	105	21	58	230	65	2	0.9
240020	20	40	145	26.9	42.4	105	21	58	230	65	2	0.9
240025	25	40	145	33.7	48.3	113	26	58	230	65	2	1.1
240032	32	40	145	42.4	60.3	117	25	58	260	80	2	1.3
240040	40	40	188	48.3	70	114	31	58	260	80	2.5	2.3
240050	50	40	188	60.3	88.9	121	31	58	300	100	3	3.1
240065	65	25	280	76.1	114.3	154	52	82	300	110	3	4.4
240080	80	25	280	88.9	131	166	58	82	300	110	3	5.4
240100	100	25	280	114.3	156	173	52	82	325	122.5	3	7.7
240125	125	25	400	139.7	178	221	68	82	325	137.5	4	15.5
240150	150	25	600	168.3	219.1	240	74	82	350	150	4	16.1
240200	200	25		219.1	273		72	134	400	180	4	38.2
240250	250	25		273	355.6		88	134	530	225	4	73.6

Balancing valves, stainless steel

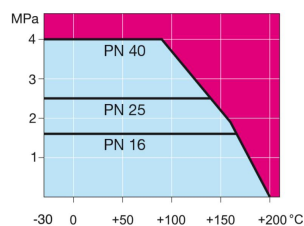
flange/flange, DN 15-250

Body: Stainless steel, X2CrNiMo17-12-2 (1.4404)
 Ball: Stainless steel, X2CrNiMo17-12-2 (1.4404)
 Stem: Stainless steel, X2CrNiMo17-12-2 (1.4404)
 Stem seals: FPM/NBR
 Ball seals: PTFE+GF
 Flanges: EN 1092-1
 Available PN 10, 16, 25, 40
 Operation: DN 15–50 with stainless steel handle
 DN 65–150 with zinc-plated steel handle
 DN 200–250 with manual gear

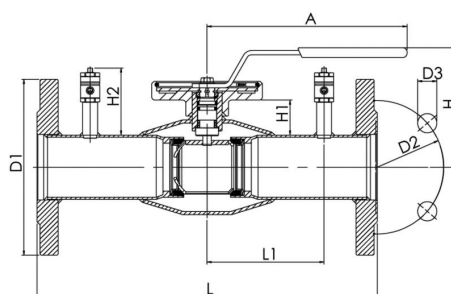


Operating conditions

-30 °C - +200 °C
 Below -10 °C contact manufacturer



Not for steam



Product no. Vexve	DN	PN	A	D1	D2	D3	H	H1	H2	L	L1	Holes	kg
243015	15	40	145	95	65	14	105	21	58	250	65	4	2.1
243020	20	40	145	105	75	14	105	21	58	250	65	4	2.6
243025	25	40	145	115	85	14	113	26	58	240	65	4	3.1
243032	32	40	145	140	100	18	117	25	58	280	80	4	4.7
243040	40	40	188	150	110	18	114	31	58	270	80	4	6
243050	50	40	188	165	125	18	121	31	58	310	100	4	8.1
243065	65	16	280	185	145	18	160	58	82	310	110	8	10.1
243080	80	16	280	200	160	18	173	64	82	310	110	8	12
243100	100	16	280	220	180	18	173	52	82	350	122.5	8	15.9
243125	125	16	400	250	210	18	221	68	82	360	137.5	8	25.6
243150	150	16	600	285	240	22	240	74	82	390	150	8	30
243200	200	16		340	295	22		72	133	425	172.5	12	56.7
243250	250	16		405	355	26		88	133	550	225	12	103.9